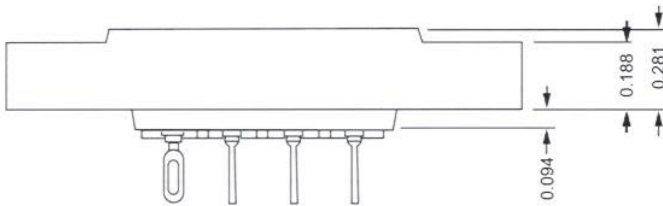
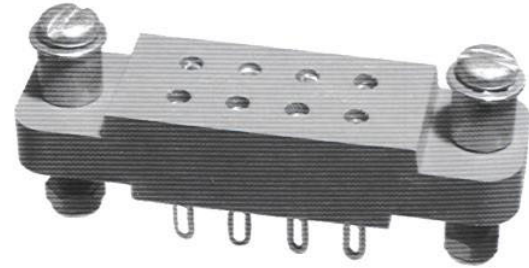
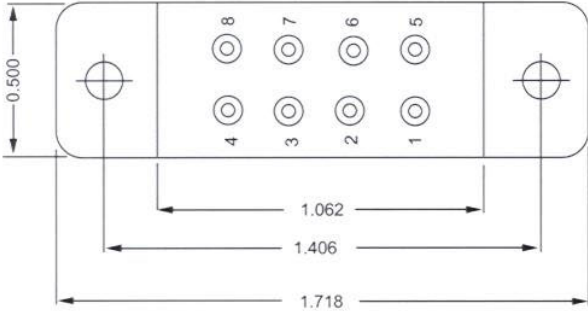


HRCL SERIES



ELECTRICAL

Wire Size:

Solder Cup Type One #20 AWG
 Eyelet Type Two #20 AWG or
 Three #22 AWG

Current Rating 10 Amperes

Withstanding Voltage:

Contact to Contact Sea Level 2700 VRMS Minimum
 Contact to Ground Sea Level 5400 VRMS Minimum
 Contact to Contact 70,000 Ft. 560 VRMS Minimum
 Contact to Ground 70,000 Ft. 975 VRMS Minimum

MECHANICAL

Creepage Between Contacts 0.16 Minimum

Air Space Between Contacts 0.11 Minimum

Contacts to Accept 0.050 ± 0.001 DIA. Pins

Contacts:

Spring Temper Grade "A" Phosphor Bronze, or
 Heat Treated Beryllium Copper
 Gold Plated over Copper or Nickel Plate

Mounting Hardware:

Special Studs, Screws, Lockwashers, and Nuts

Insulation Material:

Choice of "MIL Approved" Thermosetting
 Insulations (See Page 45)

Temperature Ratings: -65°C to +125°C

Weight of Socket with Mountings: 0.39 oz.

CONTACT DATA	CHASSIS MOUNTING DATA				
	CHASSIS THICK. KNES	X-DIMENSION	MOUNTING TYPE		
			BELOW CHASSIS	BELOW CHASSIS	ABOVE CHASSIS
 SOLDER CUP	1/32	.20		HRCL-1	
	3/32	.17			
	1/8	.14		HRCL-41	
 EYELET	1/32	.20		HRCL-5	
	3/32	.17		HRCL-35	
	1/8	.14		HRCL-45	
 STRAIGHT	1/32	.12			HRCL-44
	3/32	.19			HRCL-64
	1/8				



RECOMMENDED CHASSIS CUT-OUT