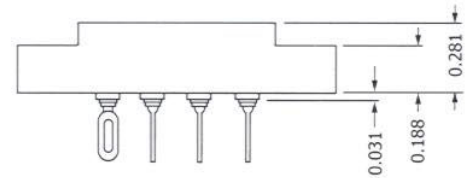
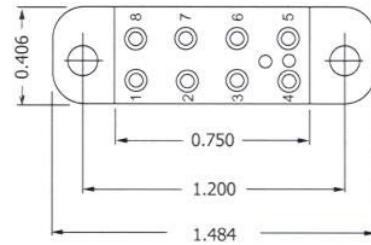


HRCZ SERIES



CONTACT DATA		CHASSIS MOUNTING DATA				
		CHASSIS THICKNESS	X-DIMENSION	BELOW CHASSIS	BELOW CHASSIS	ABOVE CHASSIS
OPEN ENTRY	SOLDER CUP	1/16	.17	HRCZ - 1		HRCZ - 2
		3/32	.14		HRCZ - 31	HRCZ - 32
		1/8	.12		HRCZ - 41	HRCZ - 42
	EYELET	1/16	.17	HRCZ - 5		HRCZ - 6
		3/32	.14		HRCZ - 35	HRCZ - 36
		1/8	.12		HRCZ - 45	HRCZ - 46
STRAIGHT	1/16				HRCZ - 4	
	3/32				HRCZ - 34	
CLOSED ENTRY	SOLDER CUP	1/16	.17	HRCZ - 1K		HRCZ - 2K
		3/32	.14		HRCZ - 31K	HRCZ - 32K
		1/8	.12		HRCZ - 41K	HRCZ - 42K
	EYELET	1/16	.17	HRCZ - 5K		HRCZ - 6K
		3/32	.14		HRCZ - 35K	HRCZ - 36K
		1/8	.12		HRCZ - 45K	HRCZ - 46K
	STRAIGHT	1/16				HRCZ - 4K
		3/32				
		1/8				

ELECTRICAL

Wire Size:

- Solder Cup Type.....One #20 AWG
- Eyelet Type.....Two #20 AWG or Three #22 AWG

Current Rating.....3 Amperes

Withstanding Voltage:

- Contact to Contact Sea Level.....2700 VRMS Minimum
- Contact to Ground Sea Level.....3300 VRMS Minimum
- Contact to Contact 70,000 Ft.....560 VRMS Minimum
- Contact to Ground 70,000 Ft.....675 VRMS Minimum

MECHANICAL

Creepage Between Contacts.....0.17 Minimum

Air Space Between Contacts.....0.11 Minimum

Contacts to Accept 0.030 ± 0.001 DIA. Pins

Contacts:

- Spring Temper Grade "A" Phosphor Bronze, or
- Heat Treated Beryllium Copper
- Gold Plated over Copper or Nickel Plate

Mounting Hardware:

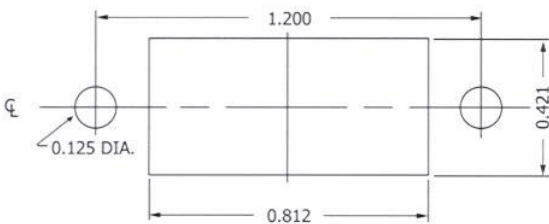
Special Studs, Screws, Lockwashers, and Nuts

Insulation Material:

Choice of "MIL Approved" Thermosetting Insulations (See Page 45)

Temperature Ratings: -65°C to +125°C

Weight of Socket with Mountings: 0.23 oz.



RECOMMENDED CHASSIS CUT-OUT