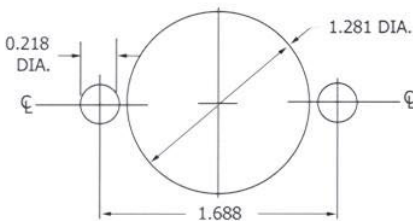


CONTACT DATA	CHASSIS MOUNTING DATA				
	CHASSIS THICKNESS	X-DIMENSION	BELOW CHASSIS	BELOW CHASSIS	ABOVE CHASSIS
 SOLDER CUP	1/16	.12		HRL - 1	HRL - 2
	3/32	.09		HRL - 31	HRL - 32
	1/8	.06	HRL - 41		HRL - 42
 EYELET	1/16	.12		HRL - 5	HRL - 6
	3/32	.09		HRL - 35	HRL - 36
	1/8	.06	HRL - 45		HRL - 46
 TURRET	1/16	.12		HRL - 3	HRL - 4
	3/32	.09		HRL - 33	HRL - 34
	1/8	.06	HRL - 43		HRL - 44
 TAPER PIN	1/16			HRL - 7	HRL - 8
	3/32			HRL - 37	HRL - 38
	1/8		HRL - 47		HRL - 48
 STRAIGHT	1/16				HRL - 54
	3/32				
	1/8				



RECOMMENDED CHASSIS CUT-OUT

ELECTRICAL

Wire Size:

- Solder Cup Type One #20 AWG
- Turret Type Two #20 AWG or Three #22 AWG
- Eyelet Type Two #20 AWG or Three #22 AWG
- Taper Type One AMP "37" Taper Receptacle

Current Rating 7.5 Amperes

Withstanding Voltage:

- Contact to Contact Sea Level 2700 VRMS Minimum
- Contact to Ground Sea Level 3300 VRMS Minimum
- Contact to Contact 70,000 Ft. 560 VRMS Minimum
- Contact to Ground 70,000 Ft. 675 VRMS Minimum

MECHANICAL

- Creepage Between Contacts 0.16 Minimum
- Air Space Between Contacts 0.09 Minimum
- Contacts to Accept 0.040 ± 0.001 DIA. Pins

Contacts:

- Spring Temper Grade "A" Phosphor Bronze, or Heat Treated Beryllium Copper
- Gold Plated over Copper or Nickel Plate

Mounting Hardware:

- Special Studs, Screws, Lockwashers, and Nuts

Insulation Material:

- Choice of "MIL Approved" Thermosetting Insulations (See Page 45)

Temperature Ratings: -65°C to +125°C

Weight of Socket with Mountings: 0.96 oz.