

CLOSED ENTRY	CONTACT DATA	CHASSIS MOUNTING DATA				
		CHASSIS THICK. KNEES	X-DIMENSION	MOUNTING TYPE		
				BELOW CHASSIS	BELOW CHASSIS	ABOVE CHASSIS
 SOLDER CUP	$\frac{1}{16}$	.12		HRSA - 1K		
	$\frac{3}{32}$	.09		HRSA - 31K		
	$\frac{1}{8}$	.06	HRSA - 41K			
 EYELET	$\frac{1}{16}$	.12		HRSA - 5K	HRSA - 6K	
	$\frac{3}{32}$	.09		HRSA - 35K		
	$\frac{1}{8}$	.06	HRSA - 45K			
 STRAIGHT	$\frac{1}{16}$				HRSA - 10K	
	$\frac{3}{32}$					
	$\frac{1}{8}$					

### ELECTRICAL

Wire Size:  
 Solder Cup Type ..... One #20 AWG  
 Eyelet Type ..... Two #20 AWG or Three #22 AWG  
 Current Rating ..... 7.5 Amperes  
 Withstanding Voltage:  
 Contact to Contact Sea Level ..... 2700 VRMS Minimum  
 Contact to Ground Sea Level ..... 2700 VRMS Minimum  
 Contact to Contact 70,000 Ft. .... .560 VRMS Minimum  
 Contact to Ground 70,000 Ft. .... .560 VRMS Minimum

### MECHANICAL

Creepage Between Contacts ..... 0.16 Minimum  
 Air Space Between Contacts ..... 0.10 Minimum  
 Contacts to Accept 0.040 ± 0.001 DIA. Pins

### Contacts:

Spring Temper Grade "A" Phosphor Bronze, or Heat Treated Beryllium Copper  
 Gold Plated over Copper or Nickel Plate

### Mounting Hardware:

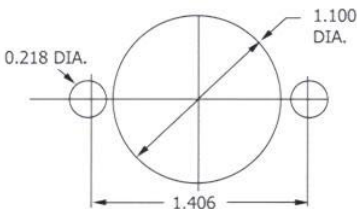
Special Studs, Screws, Lockwashers, and Nuts

### Insulation Material:

Choice of "MIL Approved" Thermosetting Insulations (See Page 45)

Temperature Ratings: -65°C to +125°C

Weight of Socket with Mountings: 0.95 oz.



RECOMMENDED CHASSIS CUT-OUT