

■ General characteristics

No. of poles	1 Form Z
Volume	45 cm ³ [2.75 in ³]
Mass	195 grams [.43 lb. Max]

D50

■ Switching characteristics

Operate time @ 25° C	25 ms max.
Release time @ 25° C	25 ms max.
Bounce time @ 25° C	2 ms max.
Mechanical Life (reduced current)	100,000 cycles

Contact rating	Type of load (High level)		28 Vdc
		Cycles x 10 ³	
	Resistive	50	50 amps
	Inductive	50	50 amps
	Motor	50	20 amps
	Lamp	50	20 amps
	Overload current	N/A	400 amps
	Rupture current	N/A	500 amps

■ Environmental characteristics

Temperature Range	-70°C to +125°C
Vibration, any axis (Sinusoidal)	15 g 10-2000 Hz
Shock, any axis	25 g 11 ms
Seal	Hermetic (1 x 10 ⁻⁸ atm cm ³ /s)

■ Electrical characteristics

Contact voltage drop (@ Rated resistive load)					
- Initial	150 mV Max.				
- After guaranteed life	175 mV Max.				
- Initial					
Dielectric strength @ sea level					
- Initial @ 60Hz	<table border="1"> <tr> <th>Coil to Case</th> <th>All other points</th> </tr> <tr> <td>1050 Vrms</td> <td>1050 Vrms</td> </tr> </table>	Coil to Case	All other points	1050 Vrms	1050 Vrms
Coil to Case	All other points				
1050 Vrms	1050 Vrms				
Insulation Resistance					
- Initial	100 Megohms min. @ 500 Vdc				
Reference Military Specifications	MIL-PRF-6106				

D S 50 E 4 2 D

RELAY TYPE

'D' SERIES

OPTIONAL

'S' OR 'R' Internal Voltage suppressor

RELAY AMPS

50 AMPS

COIL CODE

See Page 4

MOUNTING STYLES

See Page 5

TERMINAL STYLE AND FINISH

See Page 6

'D' FOR CATALOG STANDARD OR

'A' FOR CATALOG STANDARD WITHOUT TERMINAL BARRIERS

'XXXX' FOR SPECIAL INSTRUCTIONS OR SPECIFICATIONS

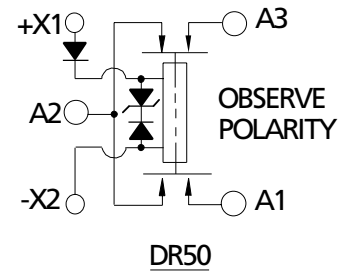
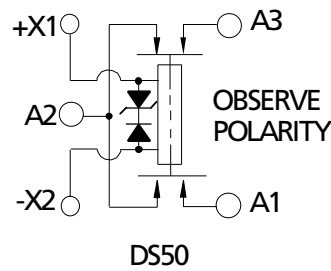
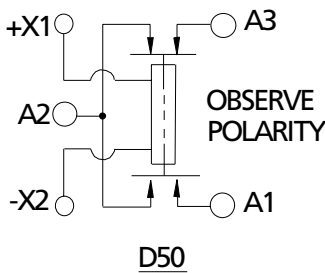
(ASSIGNED BY DRI)

Coil Characteristics

COIL CODE	D C
	E
Nominal coil voltage	28
Maximum pick-up voltage at 25°C	13,5
Maximum pick-up voltage at 125°C	18
Minimum drop-out voltage at -70°C	1,5
Coil resistance (ohms ± 10% at 25°C)	290
Maximum coil transient suppression (where applicable) VDC	SEE CIRCUIT DIAGRAM

Circuit Diagram

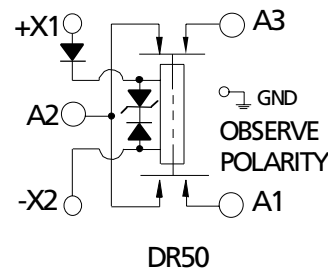
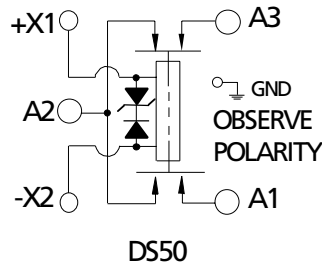
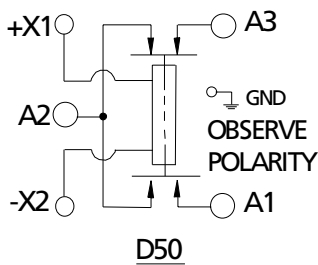
TERMINAL STYLE 1



INTERNAL VOLTAGE SUPPRESSOR
(-42 Vdc MAX.)

INTERNAL VOLTAGE SUPPRESSOR
(-5 Vdc MAX.)

TERMINAL STYLE 2



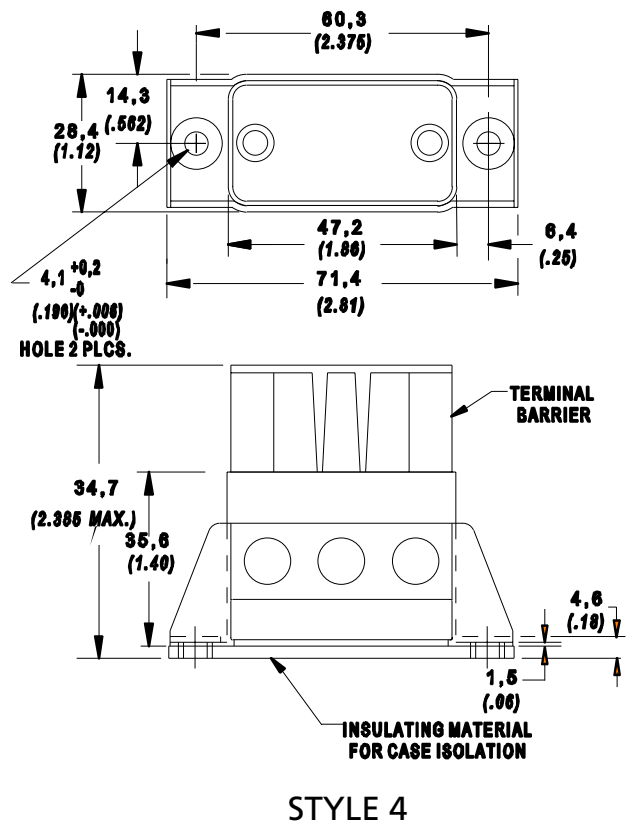
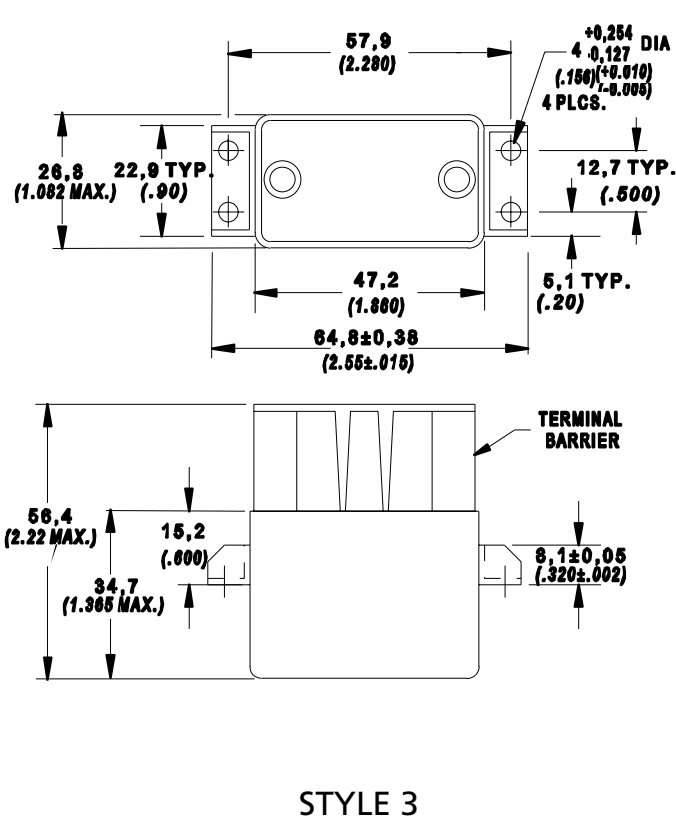
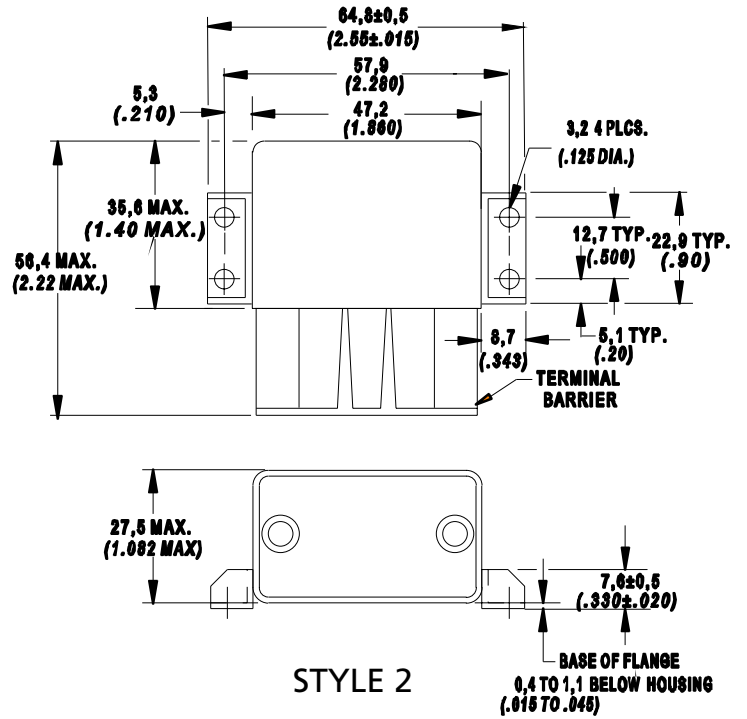
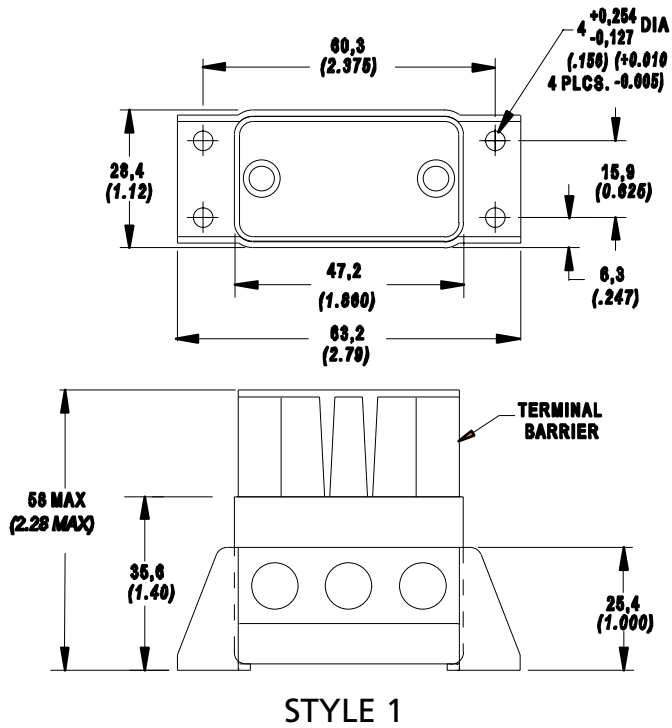
INTERNAL VOLTAGE SUPPRESSOR
(-42 Vdc MAX.)

INTERNAL VOLTAGE SUPPRESSOR
(-5 Vdc MAX.)

D50 Technical Characteristics

■ Mounting styles

DIMENSIONS ARE IN MM (IN.)
UNLESS OTHERWISE SPECIFIED, TOLERANCE IS $\pm 0,25$ [.010]

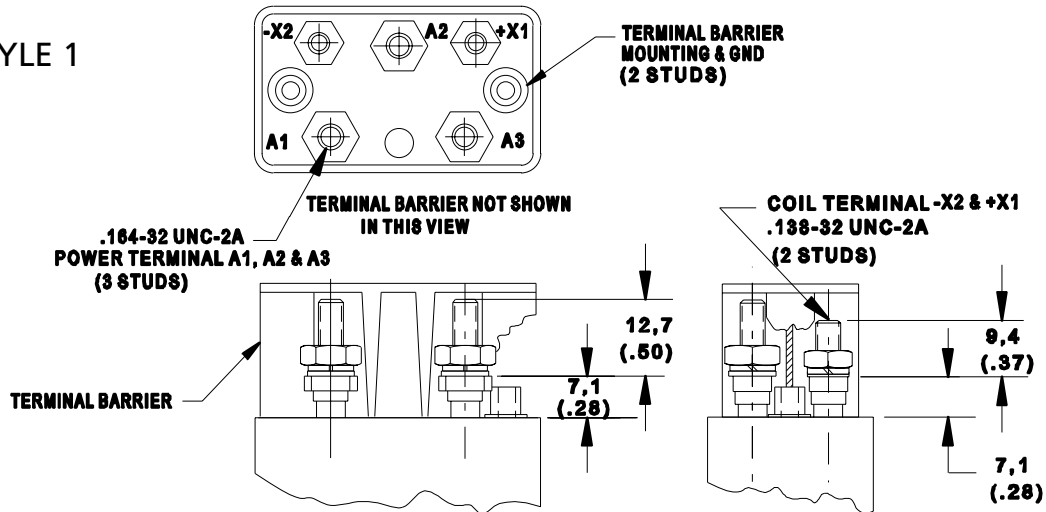


D50 Technical Characteristics

Terminal styles

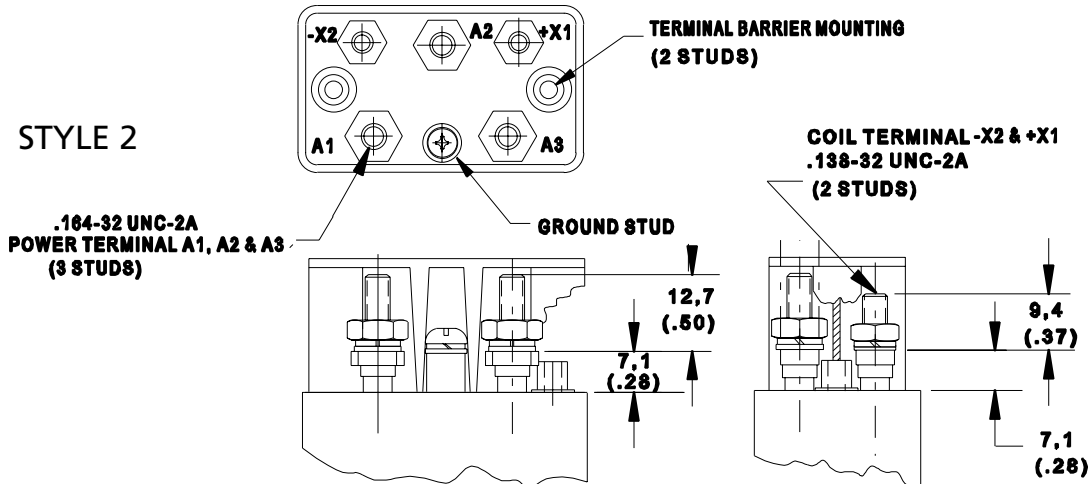
DIMENSIONS ARE IN MM (IN.)
UNLESS OTHERWISE SPECIFIED, TOLERANCE IS $\pm 0,25$ [.010]

STYLE 1



FINISH: TERMINALS, HEADER AND HOUSING NICKEL PLATED

STYLE 2



FINISH: TERMINALS, HEADER AND HOUSING NICKEL PLATED

HARDWARE SUPPLIED:

STYLE 1	QTY	STYLE 2	QTY
#6 NUT	2	#6 NUT	
#8 NUT	3	#8 NUT	2
#6 LOCKWASHER	2	#6 LOCKWASHER	3
#8 LOCKWASHER	3	#8 LOCKWASHER	3
#6 FLAT WASHER(NARROW)	2	#6 FLAT WASHER(NARROW)	3
#6 FLAT WASHER(NARROW)	3	#8 FLAT WASHER(NARROW)	3
#6 FILLISTER HEAD SCREW	2	#6 FILLISTER HEAD SCREW	3
* TERMINAL BARRIER	1	#6 PAN HEAD SCREW	2
		* TERMINAL BARRIER	1
			1

*NOT SUPPLIED WHEN SPECIFYING P/N ENDING WITH 'A'