



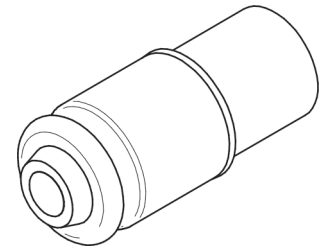
**L3HARRIS™**  
FAST. FORWARD.

# ML 5101 LED BULB REPLACEMENT

## FEATURES

- > Wide illumination over large area
- > Water clear lens
- > Flat-topped LED
- > High intensity LED
- > Center contact anode standard
- > Multiple LED colors available
- > Voltage options (see chart)
- > Direct replacement for standard bulb fitting
- > Standard polarity replacement
- > Internal resistor
- > No color filter required

Colors	Color Code
Red	R
Yellow	Y
Green	G
Blue	B
Warm White	W
Cool White	C



ML 5101 Replacement LEDs are rugged durable LED indicators that are a direct replacement for standard bulb fittings. These LEDs have a water clear lens and flat tops for a large illumination area. The LEDs are a direct replacement for standard polarity and are manufactured with internal resistor protection. They are available in a large variety of colors and voltages. Warm white can be used behind a colored lens as a true replacement for a filament lamp.

PROPERTIES	
Connection	T1-3/4 Midget Groove S5.7s Base
Weight	0.5 grams
Bulb Size	T1-3/4
Operational Temp.	-30°C to 75°C
Storage Temp.	-40°C to 100°C

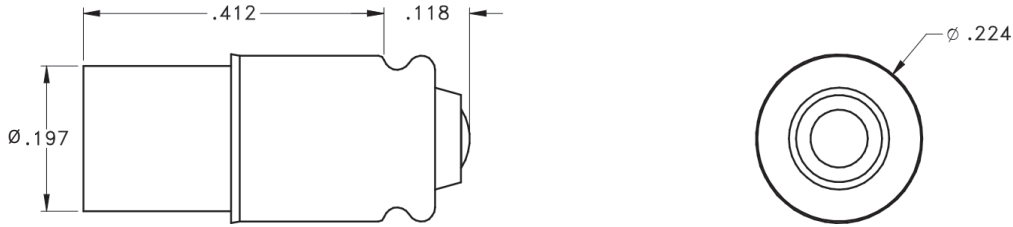
## ELECTRO-OPTICAL SPECIFICATIONS

CHARACTERISTICS	ML5101-( )-( )							
	Voltage (Vdc) Typical	Current (mA) Typical	Red	Yellow	Green	Blue	Warm White	Cool White
Typical Luminous Intensity (mcd)	12	10 – 11	237	217	1360	270	420	743
	24/28	6 – 8 <sup>[1]</sup>	112 – 237	103 – 217	814 – 1360	270 – 364	222 – 420	393 – 743
	48	4 – 5	112	103	814	154	222	393
Typical Wavelength (λp)	(12 – 48)	(4 – 10)	619	585	520	468	SEE BELOW	SEE BELOW
	<sup>[1]</sup> Blue (12 – 14)mA							
<b>TYPICAL EMISSION WARM WHITE</b>								
	X	0.4129	0.4255	0.4970	0.4770			
	Y	0.3725	0.4000	0.4466	0.4137			
<b>TYPICAL EMISSION COOL WHITE</b>								
	X	0.275	0.280	0.290				
	Y	0.270	0.280	0.300				
Max. Power Dissipation	500 mW							

## ELECTRICAL SPECIFICATIONS

Voltage (Vdc)
12
24 – 28
48

## DIMENSIONS (INCHES)



## ML 5101 ORDERING INFORMATION

FAMILY SERIES – COLOR – VOLTAGE ML5101-( )-( )		
Model No.	Color	Voltage
ML5101-R-12	Red	12
ML5101-Y-12	Yellow	12
ML5101-G-12	Green	12
ML5101-B-12	Blue	12
ML5101-W-12	Warm White	12
ML5101-C-12	Cool White	12
ML5101-R-24/28	Red	24/28
ML5101-Y-24/28	Yellow	24/28
ML5101-G-24/28	Green	24/28
ML5101-B-24/28	Blue	24/28
ML5101-W-24/28	Warm White	24/28
ML5101-C-24/28	Cool White	24/28
ML5101-R-48	Red	48
ML5101-Y-48	Yellow	48
ML5101-G-48	Green	48
ML5101-B-48	Blue	48
ML5101-W-48	Warm White	48
ML5101-C-48	Cool White	48

## NOTE:

LABELING INFORMATION	
Laser etch case	ML5101
Laser etch date code	YYWW
<b>Label ESD BAG:</b>	<b>Example:</b>
Cage code	10236
Model number	ML5101-R-12
Date code (YYWW)	2030

## ML 5101 LED BULB REPLACEMENT

© 2021 L3Harris Technologies, Inc. | 07/2021

Refer to your Trade Compliance Lead or Empowered Official for exact disclaimer language.

L3Harris Technologies is an agile global aerospace and defense technology innovator, delivering end-to-end solutions that meet customers' mission-critical needs. The company provides advanced defense and commercial technologies across air, land, sea, space and cyber domains.



**L3HARRIS™**  
FAST. FORWARD.

1025 W. NASA Boulevard  
Melbourne, FL 32919  
t 513 943 2000 | f 513 943 2050  
info@L3Harris.com