

# PUSHBUTTON SWITCHES

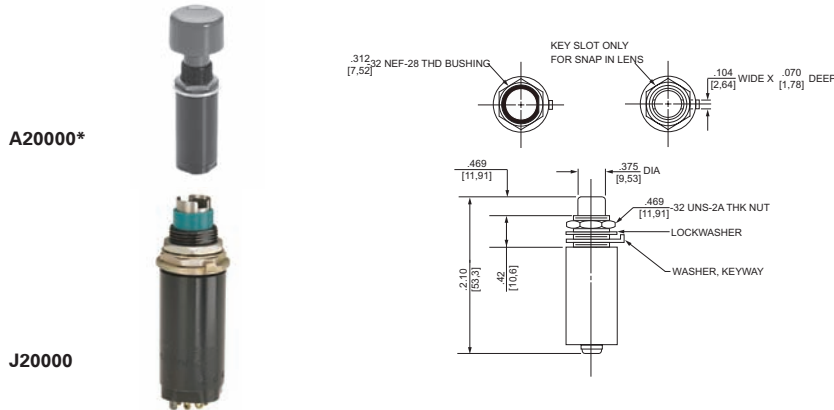
Series - A20000 Momentary Snap Action  
J20000 Push-Push (Alternate) Action

Illuminated Switches

| FEATURES   | SPECIFICATIONS   | CURRENT RATINGS |                 |                   |                     |           |      |           |           |      |
|--|--|-----------------|-----------------|-------------------|---------------------|-----------|------|-----------|-----------|------|
|  |  | 28VDC           |                 |                   | 115VAC<br>60/400 Hz |           |      |           |           |      |
|  |  | Part Number     | Number of Poles | Type of Operation | Resistive           | Inductive | Lamp | Resistive | Inductive | Lamp |
| <ul style="list-style-type: none"> <li>Moisture resistant</li> <li>Flame retardant back material</li> <li>Low operating force</li> <li>Independent lamp circuit</li> <li>Rugged case</li> <li>A20000 Series Momentary Snap Action</li> <li>J20000 Series Alternate Action</li> </ul> | <ul style="list-style-type: none"> <li>Drip-proof enclosure design level 2</li> <li>Per MIL-PRF-22885/18</li> <li>Temperature Range: -67°F to +185°F (-55°C to +85°C)</li> <li>Operating Force: 2 ± 1 lb (8.88N)</li> <li>Plunger travel: 0.160 in. (4.06mm) approx.</li> <li>Uses either M22885/19 screw type or snap-in type lenses per MIL-PRF-22885/99.</li> <li>Uses T-1-3/4 Midget Flange Base, Incandescent Lamp</li> </ul> | J20000          | 2               | Alternate         | 2                   | 1.5       | 0.5  | 2         | 1.5       | 0.5  |
|  |  | A20000          | 2               | Momentary         | 2                   | 1.5       | 0.5  | 2         | 1.5       | 0.5  |

## SELECTION TABLE

### APPROXIMATE DIMENSIONS

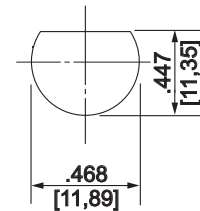
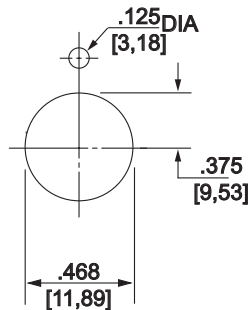
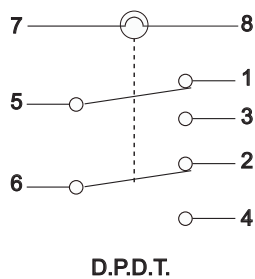
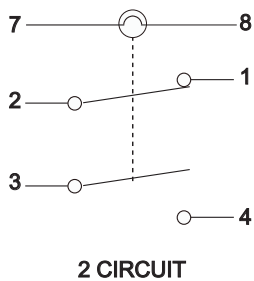


| Catalog Number          | Circuit   | Lens Type | Detail Spec. Sheet |
|-------------------------|-----------|-----------|--------------------|
| <b>Alternate Action</b> |           |           |                    |
| J20145                  | 2 P.D.T.  | Screw-in  | M22885/18-02       |
| J20149                  | 2 Circuit | Screw-in  | -04                |
| J20152                  | 2 P.D.T.  | Snap-in   | M22885/18-06       |
| J20153                  | 2 Circuit | Snap-in   | -08                |
| <b>Momentary Action</b> |           |           |                    |
| A20267                  | 2 P.D.T.  | Screw-in  | M22885/18-01       |
| A20271                  | 2 Circuit | Screw-in  | -03                |
| A20272                  | 2 P.D.T.  | Snap-in   | M22885/18-05       |
| A20273                  | 2 Circuit | Snap-in   | -07                |

\*NOTE: Catalog number does not include lens shown above.

## SCHEMATIC DIAGRAMS - A20000 AND J20000

## RECOMMENDED PANEL MOUNTING HOLE DIMENSIONS



**STANDARD**  
0.00 = inches  
[0,0] = mm

Dimensions for reference only.