

## | C SERIES (CA, CM, CDA, CDM)

### 2 TO 40 AMP COMMERCIAL THERMAL CIRCUIT BREAKER

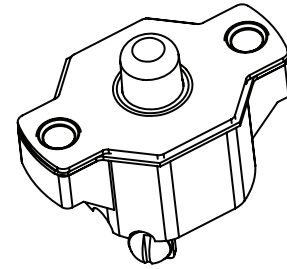
#### Introduction

The C series thermal breakers are designed to protect wiring and meet the harshest environmental requirements. The C series closed construction circuit breakers are weatherproof sealed for protection against moisture, dust, grease, fuel vapors and other harsh environments. The C series breakers are compact, lightweight and designed to interrupt short circuits or overloads, and combine trip-free protection with fast response time. Typical applications are protection of wire cable of accessory circuits, equipment and battery protection in construction and off-road equipment, marine, recreational vehicles (RV's), mining, agricultural equipment and electric (hybrid) vehicles.



#### Features

- 30VDC or 120VAC, 2 to 40 Amps
- Open and closed construction
- Automatic and manual reset options
- Ignition protected SAE J1171
- Weatherproof SAE J553
- UL Recognized E36869



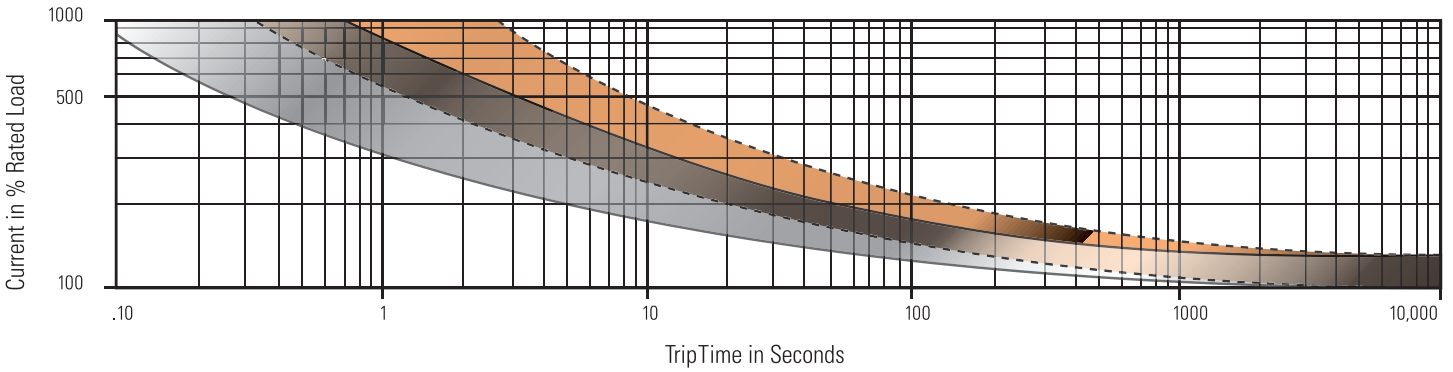
#### SPECIFICATIONS

<b>Calibration : 200% rated current, 77°F (25°C)</b>	2 to 10 amps : 20 to 150 seconds 12.5 to 40 amps : 5 to 55 seconds
<b>Ultimate Trip At 77°F (25°C)</b>	Must hold 100%, Must trip 135%
<b>Endurance</b>	Per SAE J553
<b>Interrupt Current Capacity</b>	Per SAE J553 and ABYC E-11
<b>Vibration</b>	10G MIL-STD-202 Method 204, Condition A
<b>Mechanical Shock</b>	MIL-STD-202 Method 101D (sealed only)
<b>Dielectric Strength</b>	MIL-STD-202 Method 301, 1500VAC min
<b>Insulation Resistance</b>	MIL-STD-202 Method 302, Condition B, 100MΩ min
<b>Weight</b>	CDM: 48 grams max CDA: 41 grams max CM : 37 grams max CA : 32 grams max



# TRIP CURVE

## Approximate Time, Current Characteristics At 77°F (25°C)

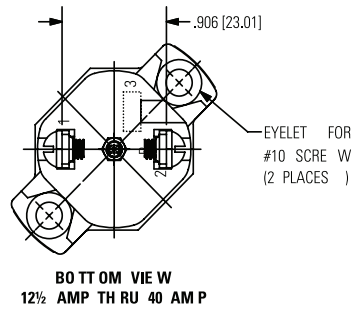
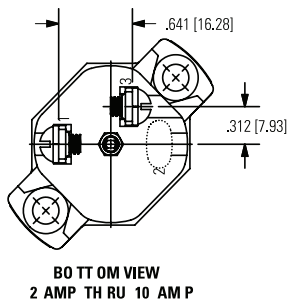
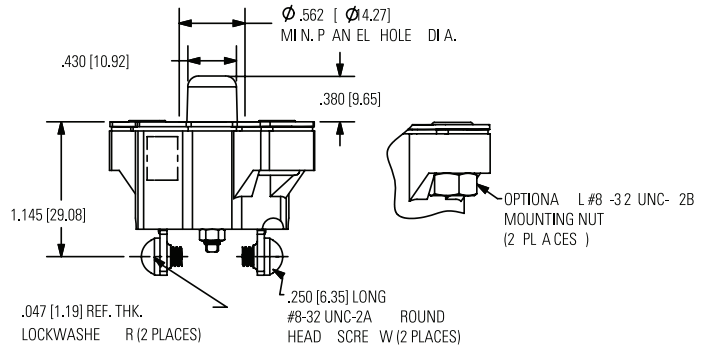
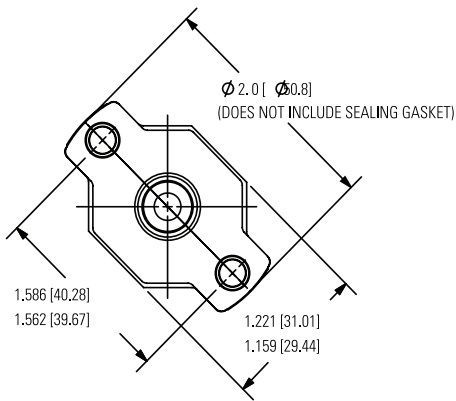


Dotted Lines: 10 amps or below  
 Solid Lines: Above 10 amps



# DIMENSIONS

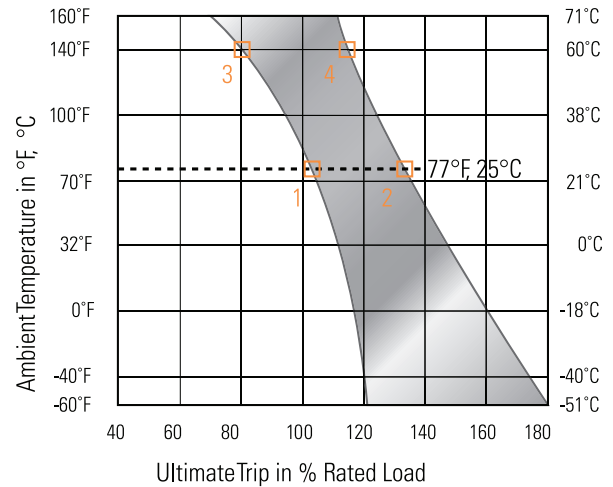
All dimensions are in inches [mm]





## DERATING CURVE

Performance characteristics are based on room temperature (77°F, 25°C). Consult derating curve for ambient temperatures significantly higher or lower than standard room temperature. Example: At 77°F (25°C) the device is calibrated to hold at 100% of rated current (1) and trip at 135% of rated current (2). At 140°F (60°C), the same device will hold at approximately 78% of rated current (3), and trip at approximately 115% of rated current (4).



## ORDERING OPTIONS

Example : CA-15-

### Configuration

CA - 15 -

- CA:** Auto, open unit
- CM:** Manual, open unit
- CDA:** Auto, sealed unit
- CDM:** Manual, sealed unit

### Amp Rating

2	6	15	30
3	8	17.5	35
4	10	20	40
5	12.5	25	

### Mounting Nuts

- : Leave blank for none
- I: Optional mounting nuts

Sensata Technologies, Inc. ("Sensata") data sheets are solely intended to assist designers ("Buyers") who are developing systems that incorporate Sensata products (also referred to herein as "components"). Buyer understands and agrees that Buyer remains responsible for using its independent analysis, evaluation and judgment in designing Buyer's systems and products. Sensata data sheets have been created using standard laboratory conditions and engineering practices. Sensata has not conducted any testing other than that specifically described in the published documentation for a particular data sheet. Sensata may make corrections, enhancements, improvements and other changes to its data sheets or components without notice.

Buyers are authorized to use Sensata data sheets with the Sensata component(s) identified in each particular data sheet. HOWEVER, NO OTHER LICENSE, EXPRESS OR IMPLIED, BY ESTOPPEL OR OTHERWISE TO ANY OTHER SENSATA INTELLECTUAL PROPERTY RIGHT, AND NO LICENSE TO ANY THIRD PARTY TECHNOLOGY OR INTELLECTUAL PROPERTY RIGHT, IS GRANTED HEREIN. SENSATA DATA SHEETS ARE PROVIDED "AS IS". SENSATA MAKES NO WARRANTIES OR REPRESENTATIONS WITH REGARD TO THE DATA SHEETS OR USE OF THE DATA SHEETS, EXPRESS, IMPLIED OR STATUTORY, INCLUDING ACCURACY OR COMPLETENESS. SENSATA DISCLAIMS ANY WARRANTY OF TITLE AND ANY IMPLIED WARRANTIES OF MERCHANTABILITY, FITNESS FOR A PARTICULAR PURPOSE, QUIET ENJOYMENT, QUIET POSSESSION, AND NON-INFRINGEMENT OF ANY THIRD PARTY INTELLECTUAL PROPERTY RIGHTS WITH REGARD TO SENSATA DATA SHEETS OR USE THEREOF.

All products are sold subject to Sensata's terms and conditions of sale supplied at [www.sensata.com](http://www.sensata.com) SENSATA ASSUMES NO LIABILITY FOR APPLICATIONS ASSISTANCE OR THE DESIGN OF BUYERS' PRODUCTS. BUYER ACKNOWLEDGES AND AGREES THAT IT IS SOLELY RESPONSIBLE FOR COMPLIANCE WITH ALL LEGAL, REGULATORY AND SAFETY-RELATED REQUIREMENTS CONCERNING ITS PRODUCTS, AND ANY USE OF SENSATA COMPONENTS IN ITS APPLICATIONS, NOTWITHSTANDING ANY APPLICATIONS-RELATED INFORMATION OR SUPPORT THAT MAY BE PROVIDED BY SENSATA.

Mailing Address: Sensata Technologies, Inc., 529 Pleasant Street, Attleboro, MA 02703, USA.

## CONTACT US

### Americas

+1 508 236 2551  
electrical-protection-sales@  
sensata.com

### Europe, Middle East & Africa

+3 174 357 8156  
info-sse@list.sensata.com

### Asia Pacific

EP\_Asia\_Public@list.sensata.  
com

**China:** +86 (21)2306 1651

**India/ Middle East:** +91  
(40)4033 9611

**Japan:** +81 (45)277 7104

**Korea:** +82 (53) 644 9685