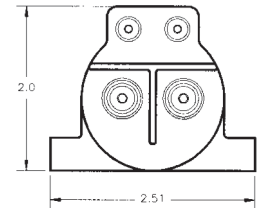
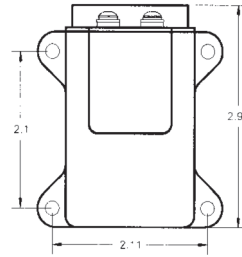
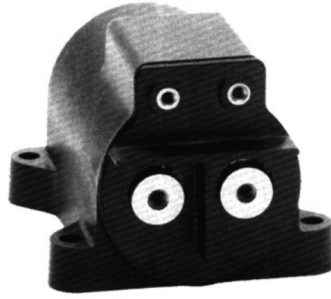


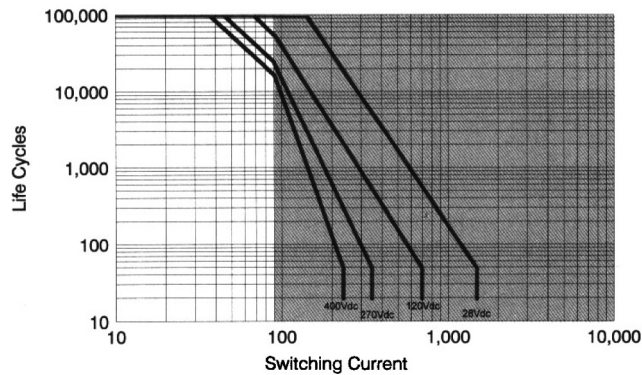
## AP90X-05 - 90 Amps SPUD Contactor

### Product Facts

- 90 A carry, 350 A overload @ 270 Vdc
- Same size and weight as AP50X
- Versatile power, voltage, and current operating range
- Ideal for circuit protection and control
- Bi-directional switching
- Fast operate and release time
- Low power consumption
- Vacuum-sealed contacts; can operate in harsh environments
- Space-rated version built in accordance with customers SCD
- Meets many requirements of MIL-PRF-32085



### Contact Ratings\*



\*Based on data extrapolated from qualification at 270 Vdc with resistive load. Since each application is unique, user is encouraged to verify rating in actual application.

### Product Specifications

**Contact Arrangement** — SPST-NO  
**Contact Form** — X  
**Rated Resistive Load @ 270 Vdc** — 90 A  
**Continuous Current Carry, Max.** — 65 A  
**Overload @ 270 Vdc** — 350 A  
**Contact Resistance, Max.** — 2 mohm

**Dielectric at Sea Level** — Coil to Power Terminals — 1,800 Vrms  
 All Other Points — 2,000 Vrms  
**Shock, 11ms, 1/2 Sine (Peak)** — 30 g  
**Vibration, Sinusoidal (55-2000 Hz, Peak)** — 20 g  
**Operating Ambient Temperature Range** — -55°C to +90°C  
**Load Life @ 270 Vdc, Min.** — 25,000 cycles

**Operate Time, Excluding Bounce, Max.** — 35 ms  
**Release Time, Max.** — 10 ms  
**Bounce Time, Max.** — 8 ms  
**Insulation Resistance @ 500 Vdc, Min.** — Initial — 100 mohm  
 End of Life — 50 mohm  
**Weight, Nominal** — 454 gram (16 oz.)

### Coil Data

Volts, Nominal	12	28	120
Pickup, Max.	9.9 Vdc	23 Vdc	99 Vdc
Dropout, Min.	.4 Vdc	1.0 Vdc	4.0 Vdc
Coil Resistance (±10%)	19 Ω	103 Ω	1890 Ω
Energy, Magnetic, Max.	.05 J	.05 J	.05 J

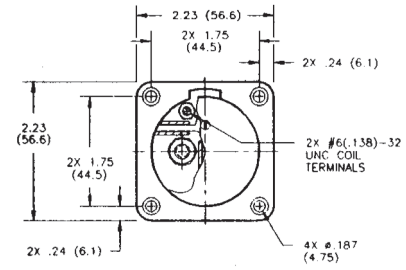
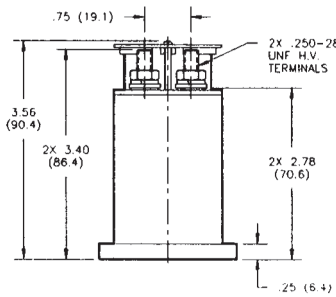
Coil resistance rated at 25°C

For factory-direct application assistance, dial 800-253-4560, ext. 2055, or 805-220-2055.

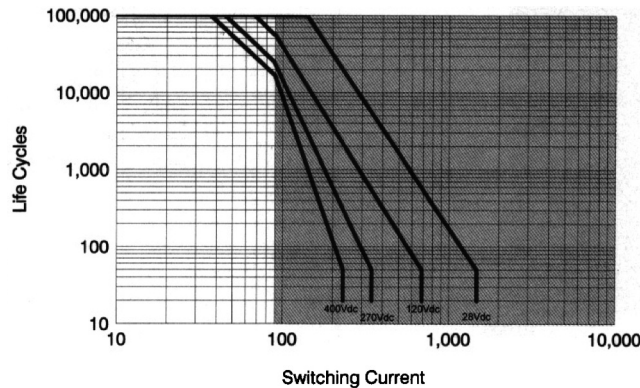
## AP90X - 90 Amps SPUD Contactor

### Product Facts

- 90 A carry, 350 A overload @ 270 Vdc
- Same size and weight as AP50X
- Versatile power, voltage, and current operating range
- Ideal for circuit protection and control
- Bi-directional switching
- Fast operate and release time
- Low power consumption
- Vacuum-sealed contacts; can operate in harsh environments
- Space-rated version built in accordance with customers SCD
- Meets many requirements of MIL-PRF-32085



### Contact Ratings\*



Maximum continuous current carry = 90 Amps

\*Based on data extrapolated from qualification at 270 Vdc with resistive load. Since each application is unique, user is encouraged to verify rating in actual application.

### Product Specifications

- Contact Arrangement** — SPST-NO
- Contact Form** — X
- Rated Resistive Load @ 270 Vdc** — 90 A
- Continuous Current Carry, Max.** — 90 A
- Overload @ 270 Vdc** — 350 A
- Contact Resistance, Max.** — 2 mohm

- Dielectric at Sea Level** — Coil to Power Terminals — 1,800 Vrms  
All Other Points — 2,000 Vrms
- Shock, 11ms, 1/2 Sine (Peak)** — 30 g
- Vibration, Sinusoidal (55-2000 Hz, Peak)** — 20 g
- Operating Ambient Temperature Range** — -55°C to +85°C
- Load Life @ 270 Vdc, Min.** — 25,000 cycles

- Operate Time, Excluding Bounce, Max.** — 27 ms
- Release Time, Max.** — 10 ms
- Bounce Time, Max.** — 8 ms
- Insulation Resistance @ 500 Vdc, Min.** — Initial — 100 mohm  
End of Life — 50 mohm
- Weight, Nominal** — 454 gram (16 oz.)

### Coil Data

Volts, Nominal	12	28	120
Pickup, Max.	9.9 Vdc	23 Vdc	99 Vdc
Dropout, Min.	.4 Vdc	1.0 Vdc	4.0 Vdc
Coil Resistance (±10%)	19 Ω	103 Ω	1890 Ω
Energy, Magnetic, Max.	.05 J	.05 J	.05 J

Coil resistance rated at 25°C

### Ordering Information

- Sample Part Number** ▶ **AP90 X B 5 7**
- Series:** \_\_\_\_\_
- Contact Form:** \_\_\_\_\_  
X = SPST-NO Double Make
- Coil Voltage:** \_\_\_\_\_  
A = 12 Vdc, Stud Terminals  
B = 28 Vdc, Stud Terminals  
C = 120 Vdc, Stud Terminals
- Power Terminals:** \_\_\_\_\_  
5 = Stud Terminals
- Mounting:** \_\_\_\_\_  
7 = Panel Mount

For factory-direct application assistance, dial 800-253-4560, ext. 2055, or 805-220-2055.