

CONTACT DATA	CHASSIS MOUNTING DATA				
	CHASSIS THICK. ANGLE	X-DIMENSION	BELOW CHASSIS	BELOW CHASSIS	ABOVE CHASSIS
 SOLDER CUP	$\frac{1}{16}$.09			
	$\frac{3}{32}$.06	HRHA - 31	HRHA - 1	HRHA - 2
 TURRET	$\frac{1}{16}$.09			HRHA - 42
	$\frac{3}{32}$.06			
	$\frac{1}{8}$				

ELECTRICAL

Wire Size:

- Solder Cup Type One #16 AWG
- Turret Type Two #16 AWG or
Three #20 AWG
- Current Rating 13 Amperes

Withstanding Voltage:

- Contact to Contact Sea Level 1500 VRMS Minimum
- Contact to Ground Sea Level 2700 VRMS Minimum
- Contact to Contact 70,000 Ft. 375 VRMS Minimum
- Contact to Ground 70,000 Ft. 560 VRMS Minimum

MECHANICAL

- Creepage Between Contacts 0.11 Minimum
- Air Space Between Contacts 0.05 Minimum
- Contacts to Accept 0.062 ± 0.001 DIA. Pins

Contacts:

- Spring Temper Grade "A" Phosphor Bronze, or
- Heat Treated Beryllium Copper
- Gold Plated over Copper or Nickel Plate

Mounting Hardware:

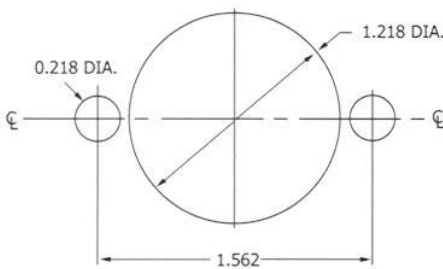
- Special Studs, Screws, Lockwashers, and Nuts

Insulation Material:

- Choice of "MIL Approved" Thermosetting
- Insulations (See Page 45)

Temperature Ratings: -65°C to +125°C

Weight of Socket with Mountings: 1.39 oz.



RECOMMENDED CHASSIS CUT-OUT