

ELECTRICAL

Wire Size:

Solder Cup Type One #16 AWG or Two #20 AWG

Turret Type Two #16 AWG or Three #20 AWG

Current Rating 13 Amperes

Withstanding Voltage:

Contact to Contact Sea Level 1500 VRMS Minimum

Contact to Ground Sea Level 2700 VRMS Minimum

Contact to Contact 70,000 Ft.375 VRMS Minimum

Contact to Ground 70,000 Ft.560 VRMS Minimum

MECHANICAL

Creepage Between Contacts 0.11 Minimum

Air Space Between Contacts 0.05 Minimum

Contacts to Accept 0.062 ± 0.001 DIA. Pins

Contacts:

Spring Temper Grade "A" Phosphor Bronze, or Heat Treated Beryllium Copper

Gold Plated over Copper or Nickel Plate

Mounting Hardware:

Special Studs, Screws, Lockwashers, and Nuts

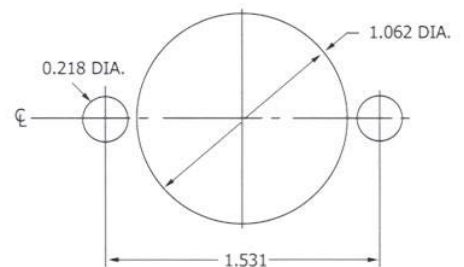
Insulation Material:

Choice of "MIL Approved" Thermosetting Insulations (See Page 45)

Temperature Ratings: -65°C to +125°C

Weight of Socket with Mountings: 1.39 oz.

CONTACT DATA	CHASSIS MOUNTING DATA				
	CHASSIS THICK. INNESS	X-DIMENSION			
			BELOW CHASSIS	BELOW CHASSIS	ABOVE CHASSIS
	1/16	.12		HRHF - 21	HRHF - 22
	3/32	.09	HRHF - 31		HRHF - 32
SOLDER CUP	1/8	.06	HRHF - 41		HRHF - 42
	3/16	.12		HRHF - 23	HRHF - 24
	11/32	.09	HRHF - 33		HRHF - 34
	1/4	.06	HRHF - 43		HRHF - 44



RECOMMENDED CHASSIS CUT-OUT