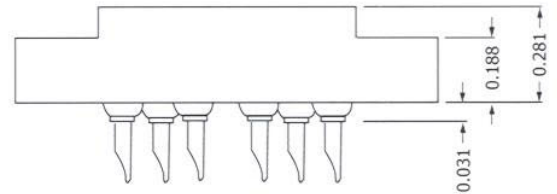
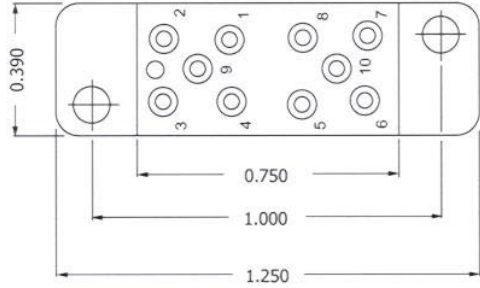
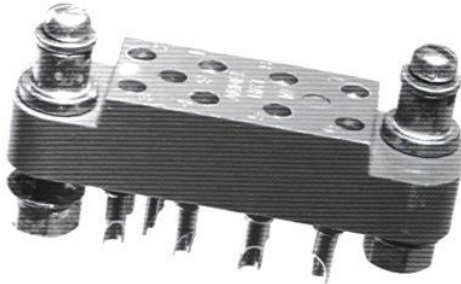


HRT SERIES



CONTACT DATA	CHASSIS MOUNTING DATA			
	CHASSIS THICKNESS	X-DIMENSION	BELOW CHASSIS	ABOVE CHASSIS
OPEN ENTRY	SOLDER CUP	10	HRT - 1	HRT - 2
		9	HRT - 7	HRT - 8
		8	HRT - 13	HRT - 14
	EYELET	10	HRT - 5	HRT - 6
		9	HRT - 11	HRT - 12
		8	HRT - 17	HRT - 18
	STRAIGHT	10	HRT - 3	HRT - 4
		9	HRT - 9	HRT - 10
		8	HRT - 15	HRT - 16
CLOSED ENTRY	SOLDER CUP	10	HRT - 1K	HRT - 2K
		9	HRT - 7K	HRT - 8K
		8	HRT - 13K	HRT - 14K
	EYELET	10	HRT - 5K	HRT - 6K
		9	HRT - 11K	HRT - 12K
		8	HRT - 17K	HRT - 18K
	STRAIGHT	10	HRT - 3K	HRT - 4K
		9	HRT - 9K	HRT - 10K
		8	HRT - 15K	HRT - 16K

ELECTRICAL

Wire Size:

Solder Cup Type One #20 AWG
 Eyelet Type Two #20 AWG or
 Three #22 AWG

Current Rating 3 Amperes

Withstanding Voltage:

Contact to Contact Sea Level . .1500 VRMS Minimum
 Contact to Ground Sea Level . .1500 VRMS Minimum
 Contact to Contact 70,000 Ft. . .375 VRMS Minimum
 Contact to Ground 70,000 Ft. . .375 VRMS Minimum

MECHANICAL

Creepage Between Contacts 0.11 Minimum
 Air Space Between Contacts 0.05 Minimum
 Contacts to Accept 0.030 + 0.001 DIA. Pins

Contacts:

Spring Temper Grade "A" Phosphor Bronze, or
 Heat Treated Beryllium Copper
 Gold Plated over Copper or Nickel Plate

Mounting Hardware:

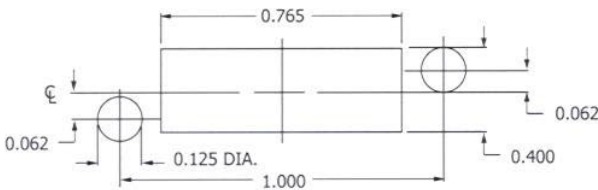
Special Studs, Screws, Lockwashers, and Nuts

Insulation Material:

Choice of "MIL Approved" Thermosetting
 Insulations (See Page 45)

Temperature Ratings: -65°C to +125°C

Weight of Socket with Mountings: 0.26 oz.



RECOMMENDED CHASSIS CUT-OUT