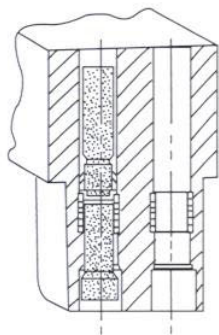
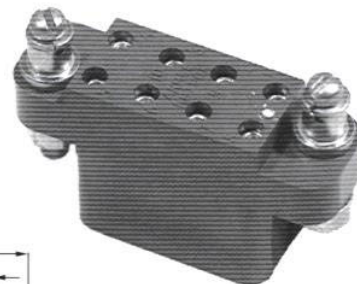
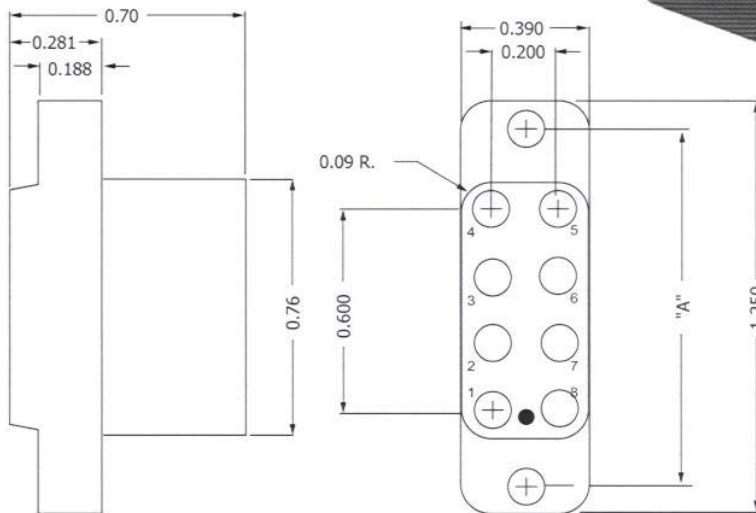


Closed Entry Contact
No. 1007010-1



Crimp
Removable Contacts



SPECIFICATIONS

ELECTRICAL

- Current Rating 3 Amperes
- Contact Size 0.030 inch
- Terminal Accomodation One No.20, One No.22,
One or Two No. 24 AWG Wire

Withstanding Voltage:

- Contact to Contact Sea Level 2700 VRMS Minimum
- Contact to Ground Sea Level 1500 VRMS Minimum
- Contact to Contact 70,000 Ft. 560 VRMS Minimum
- Contact to Ground 70,000 Ft. 375 VRMS Minimum

MECHANICAL

- Creepage Between Contacts 0.12 Minimum
- Air Space Between Contacts 0.09 Minimum
- Contacts to Accept 0.030 ± 0.001 DIA. Pins

- Contact Material & Plating Phosphor Bronze, Gold Plated
(Sleeve - Brass) (0.000050 Inch) Per MIL-G-45204
Type II, Class 1 over Copper Plate

- Contact Retaining Clip Stainless Steel, Passivated
- Crimping Tool No. MS 3191A
- Positioner No. KP7010
- Insertion Tool Not required

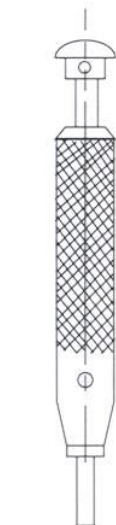
Mounting Hardware:

- Special Studs, Screws, Lockwashers, and Nuts

Insulation Material:

- Choice of "MIL Approved" Thermosetting Insulations (See Page 45)

- Temperature Ratings: -65°C to +125°C
- Weight of Socket with Mountings: 0.45 oz.



Removing Tool
No. T9066-2

PART NO.	NUMBER OF CONTACTS	"A"
HRTS-CK-13	8	1.000
HRTS-CK-103	10	1.000
HRTS-CK-2003	8	1.078