



A COMPANY OF STPI GROUP

# SE310 & SEL310

## Military Specified

### Meets MIL-DTL-12883

### General Characteristics

Weight:	0.055 lbs (25g) Max.
Grommet:	Silicone Rubber
Mounting Hardware:	Stainless Steel or Cadmium Plated
Socket Contact Material:	Gold Plated Copper Alloy
Socket Contact Type:	Closed Entry, Crimp Type, Rear Entry and Release

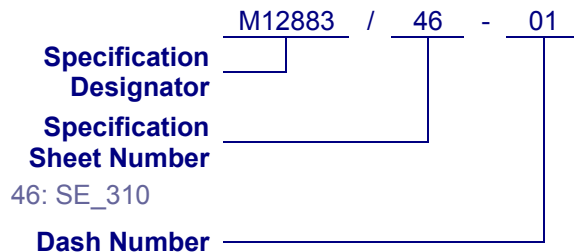
### Environmental Characteristics

Temperature Range:	-70°C to +125°C
Vibration (Sinusoidal):	30g 10-3,000 Hz
Shock (any axis):	200g, 6 ms

### Electrical Characteristics

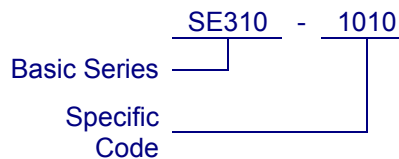
Contact Resistance:	6 MΩ
Dielectric Strength	
At Sea Level:	1,250 Vrms Max.
At 80,000 feet:	500 Vrms
Insulation Resistance:	1,000 MΩ Min

### Military Part Numbering



See Chart

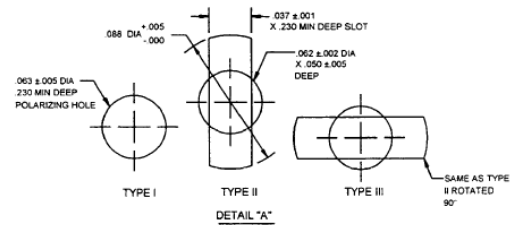
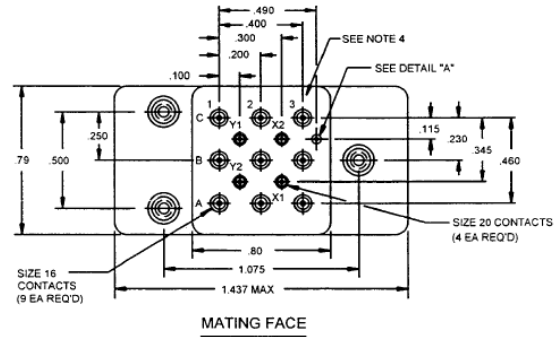
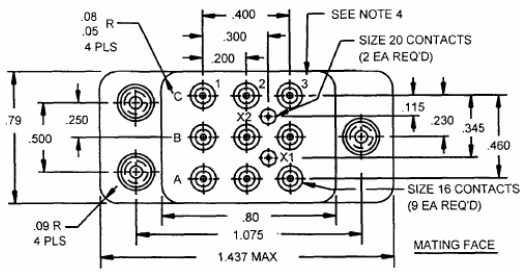
### QPL Part Numbering



### Dash Numbers – Specification Sheet Number 46

Dash Number	Basic Series	Specific Code	Body Type	Stud Type	Hardware Type	Number of Contacts	Contact Size (AWG)
01	SE310	1010	A	Fixed	Cadmium Plated	9, 2	16, 20
01S	SE310	1010S	A	Fixed	Stainless Steel	9, 2	16, 20
02	SEL310	1011	B-I	Fixed	Cadmium Plated	9, 4	16, 20
02S	SEL310	1011S	B-I	Fixed	Stainless Steel	9, 4	16, 20
03	SEL310	1012	B-II	Fixed	Cadmium Plated	9, 4	16, 20
03S	SEL310	1012S	B-II	Fixed	Stainless Steel	9, 4	16, 20
04	SEL310	1013	B-III	Fixed	Cadmium Plated	9, 4	16, 20
04S	SEL310	1013S	B-III	Fixed	Stainless Steel	9, 4	16, 20

## Terminal Layout



Body Style A

Body Style B

## Body Layout

