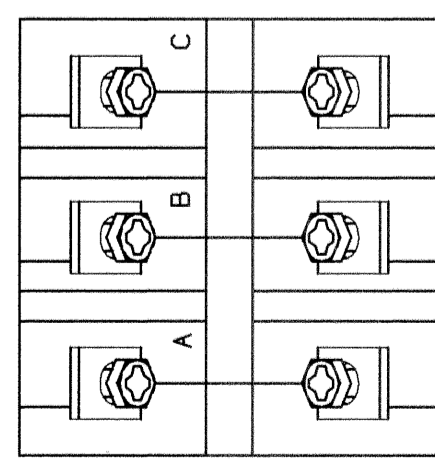
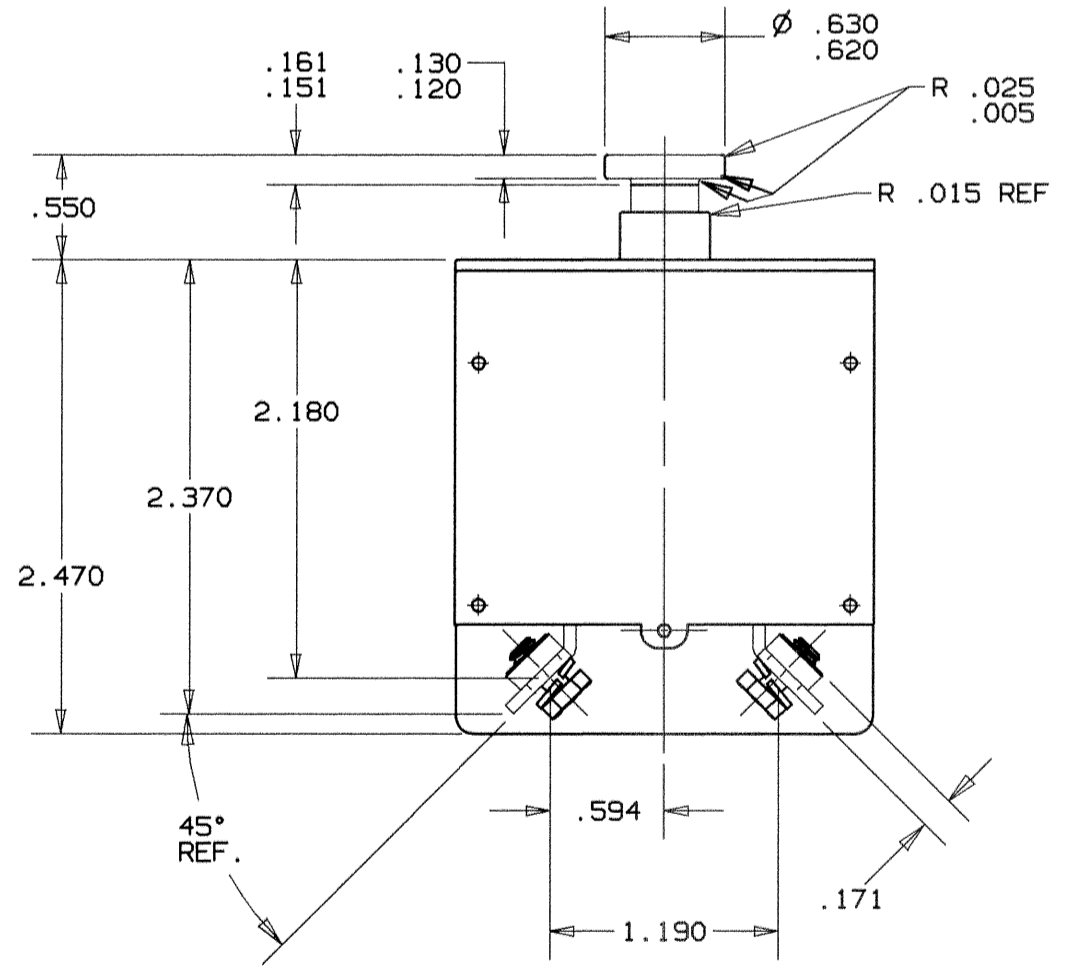
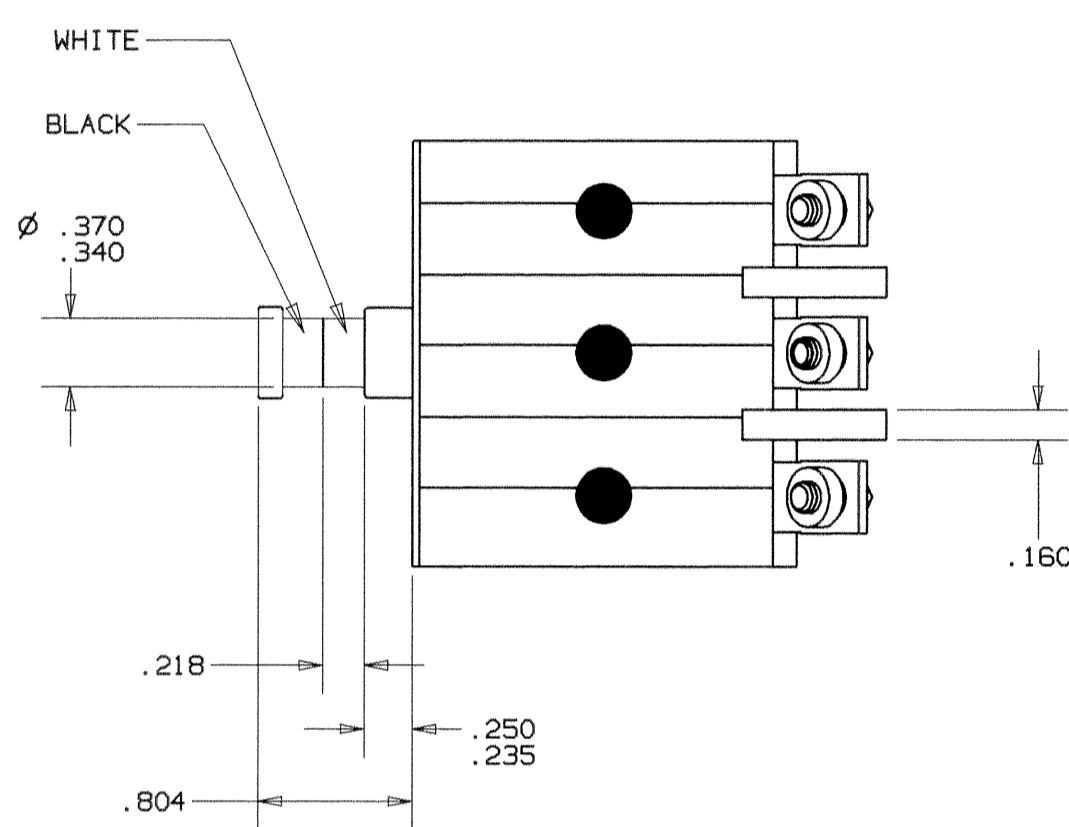
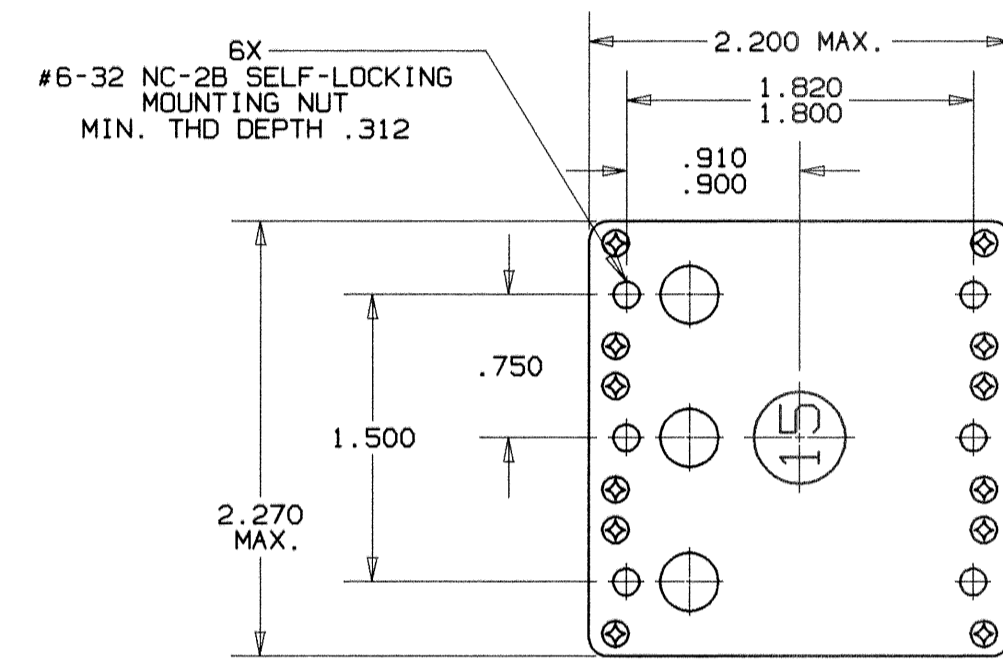
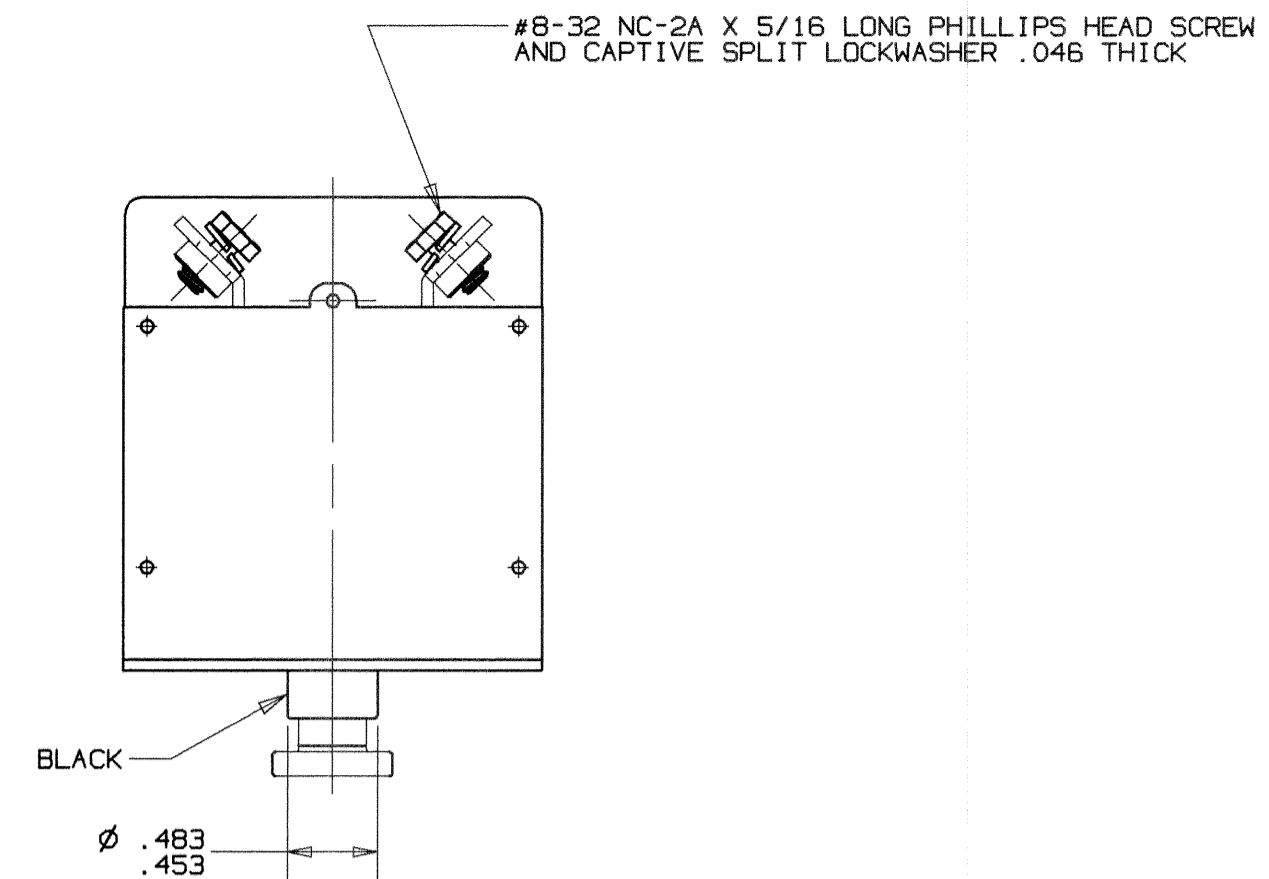


REVISIONS					
ZONE	LTR	DESCRIPTION	PROJECT	DATE	APPROVED
	P	REDRAWN TO CADRA	CRM43862 D.S.	6/1/99	S.A.R.



PART NO. 6752-305-15 SHOWN

PERFORMANCE CHARACTERISTICS
TESTED TO AND MEETS REQUIREMENTS OF MIL-C-27715 (USAF)

1. CALIBRATION AMBIENT TEMPERATURE	MIN. ULT TRIP	MAX. ULT TRIP	200%	400%	1000%	3000%
	-54°C 25°C 93.3°C 121.1°C	110% 110% 105% 100%	160% 138% 138% 138%	SEE TABLE BELOW VALUES FOR -54°C TO 93.3°C		
2. RUPTURE	120 VAC 205 VAC	400 CYCLE 400 CYCLE	6,000 AMPS 4,200 AMPS			
3. DURABILITY	120 VAC MECHANICAL RESISTIVE LOAD INDUCTIVE LOAD TOTAL	400 CYCLE (NO LOAD)	10,000 CYCLES 5,000 CYCLES 5,000 CYCLES 20,000 CYCLES			
4. VOLTAGE DROP, WHILE CARRYING RATED CURRENT	AMP RATING	MAXIMUM VOLTAGE DROP				
	2.5 5 7.5 ALL OTHERS	0.6 V 0.4 V 0.3 V 0.25 V				
5. VIBRATION	FREQUENCY		G LEVEL			
	5 - 10 CPS 10 - 23 CPS 23 - 74 CPS 74 - 300 CPS 300 - 600 CPS 600 - 700 CPS 700 - 1500 CPS	0.2 DOUBLE AMPLITUDE ±1 G 0.036 DOUBLE AMPLITUDE ±10 G ±15 G ±14 G ±10 G				
6. COORDINATION	BETWEEN RATINGS					
	2.5 - 5 5 - 10 7.5 - 15 10 - 20 15 - 35					
7. OPERATING FORCE	OPENING: 6-16 LBS. CLOSING: 14-23 LBS.					
8. DIELECTRIC STRENGTH	1500 VAC, RMS.					
9. INSULATION RESISTANCE	100 MEGOHMS AT 500 VDC.					
10. EXPLOSION PROOF	WHILE INTERRUPTING RUPTURE CURRENTS.					
11. HUMIDITY	240 HOURS.					
12. CORROSION RESISTANCE	50 HOURS.					
13. SAND AND DUST	12 HOURS.					
14. MECHANICAL SHOCK	25 G FOR 11±1 MILLISECONDS.					
15. OVERLOAD CYCLING	100 CYCLES AT 200% RATED CURRENT.					
16. FUNGUS RESISTANCE	28 DAYS.					
17. STRENGTH OF TERMINALS	25 LB. TENSILE LOAD, 20 IN-LBS. TORQUE LOAD.					
18. STRENGTH OF MOUNTING PROVISIONS	30 LB. AXIAL LOAD, 10 IN-LBS. TORQUE LOAD.					
19. STRENGTH OF ACTUATOR	25 LB. AXIAL LOAD, 40 LBS. NORMAL LOAD.					
20. ACCELERATION	10 G'S FOR 1 MINUTE.					
21. RECLOSING	NO AUTOMATIC RECLOSE.					
22. TRIP FREE	RESETTABLE ONLY AFTER MOVING THE ACTUATOR TO THE FULL OPEN POSITION.					

SUPERSEDES DWG. 6752-305 REV. 'N', DATED 10-30-95

PART NUMBER	AMP RATING	CALIBRATION IN SECONDS -65°F TO 200°F			
		200%	400%	1000%	3000%
6752-305-2 1/2	2.5	12-65	2.3-10.0	.33-1.4	.04-.16
6752-305-5	5	12-65	2.3-10.0	.33-1.4	.06-.13
6752-305-7 1/2	7.5	12-65	2.3-10.0	.33-1.4	.04-.12
6752-305-10	10	12-65	2.3-10.0	.33-1.4	.05-.13
6752-305-15	15	12-65	2.3-10.0	.33-1.4	.04-.13
6752-305-20	20	12-65	2.3-10.0	.33-1.4	.05-.12
6752-305-25	25	12-65	2.3-10.0	.33-1.4	.05-.12
6752-305-35	35	12-65	2.3-10.0	.33-1.4	.05-.12
6752-305-50	50	12-65	2.3-10.0	.33-1.4	
6752-305-60	60	23-60	3.0-10.0	.38-1.8	

THIS IS A CAD DRAWING. THE GEOMETRY IN THE ASSOCIATED CAD COMPUTER FILE IS DIMENSIONALLY ACCURATE. WHEN DRAWING IS BEING REVISED, THE GEOMETRY MUST BE UPDATED IN ALL VIEWS AND ON ALL SHEETS.

UNLESS OTHERWISE SPECIFIED DIMENSIONS ARE IN INCHES	DRAWN J.A. HORAN	DATE 12/13/62	Q3 P18
TOLERANCE ON FRACTIONS DECIMALS ANGLES ±.030	ENGINEER AL GENEST	12/13/62	
	APPROVED DOUG POTTS	12/13/62	
	APPROVED DOUG POTTS	12/13/62	
MATERIAL			
SIGNATURES ON FILE. REFER TO ELECTRONIC CHANGE NOTICE.		SIZE D	CODE IDENT NO. 82647
		TITLE 6752-305 TYPE 3 - PHASE PUSH PULL CIRCUIT BREAKER ENVELOPE DRAWING	
		SCALE: 4X	
		SHEET 1 OF 1	

TEXAS INSTRUMENTS
ATLLEBORO, MASSACHUSETTS 02703

KLIXON
CONTROL PRODUCTS
DIVISION

6752-305