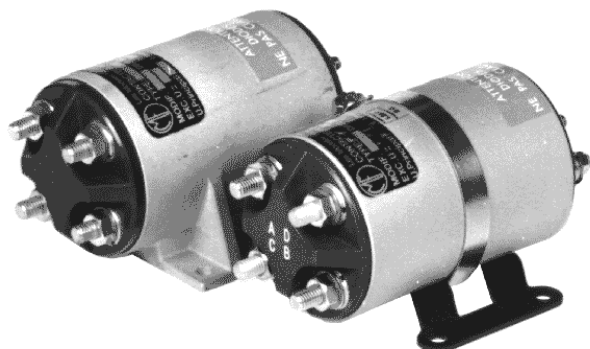


ENGINEERING DATA SHEET

SERIES 129

CONTACTOR

1PST-DB-DM+AUX, 125 AMP/28 VDC



Permanent duty
 Main contact **1NO + 1NC**
 Auxiliary contact **1NO + 1NC**
 Coil supply **Direct current**
 - Polarized and protected coil **See schematic diagram**
 Meets the requirements of **AIR 7304 AIR 8456B**
AIR 9456 MIL 6106J

PRINCIPLE TECHNICAL CHARACTERISTICS

Contacts rated at **125 A / 28 Vdc**
 Weight
 - Ref. P/N: 129 **450 g ±10%**
 - Ref. P/N: S129 **470 g ±10%**
 - Ref. P/N: M129 **480 g ±10%**
 Maximum size **92mm x 65mm x 51mm**
 Dust proof metal can.

CONTACT ELECTRICAL CHARACTERISTICS

Contact rating per pole and load type	Load Current in Amps @28Vdc	
	@28Vdc	@115Vac/400Hz
Resistive	125 (In)	
Inductive	75	
Motor	125	
Overload	8 In [1]	
Rupture	10 In [2]	
I minimum	In/10	
Auxiliary contact rating	@28Vdc	@115Vac/400Hz
Resistive	5	5
Inductive (L/R=5ms)	2.5	2.5
Lamp	2	2

Notes:

- [1] 1000 Amps for 50 cycles; duty cycle: .2 sec on, 20 sec off.
- [2] 1250 Amps for 50 cycles; duty cycle: .2 sec on, 20 sec off.
- 3. Other models available upon request. Contact factory.
- [4] Additional temperature ratings available.



Leach International
www.leachintl.com

North America
 6900 Orangethorpe Ave.
 P.O. Box 5032
 Buena Park, CA 90622 USA

Tel: (01) 714-736-7599
 Fax: (01) 714-670-1145

Europe, SA
 2 Rue Goethe
 57430 Sarralbe
 France

Tel: (33) 3 87 97 98 97
 Fax: (33) 3 87 97 84 04

Asia-Pacific Ltd.
 20/F Shing Hing Commercial Bldg.
 21-27 Wing Kut Street
 Central, Hong Kong

Tel: (852) 2 191 2886
 Fax: (852) 2 389 5803

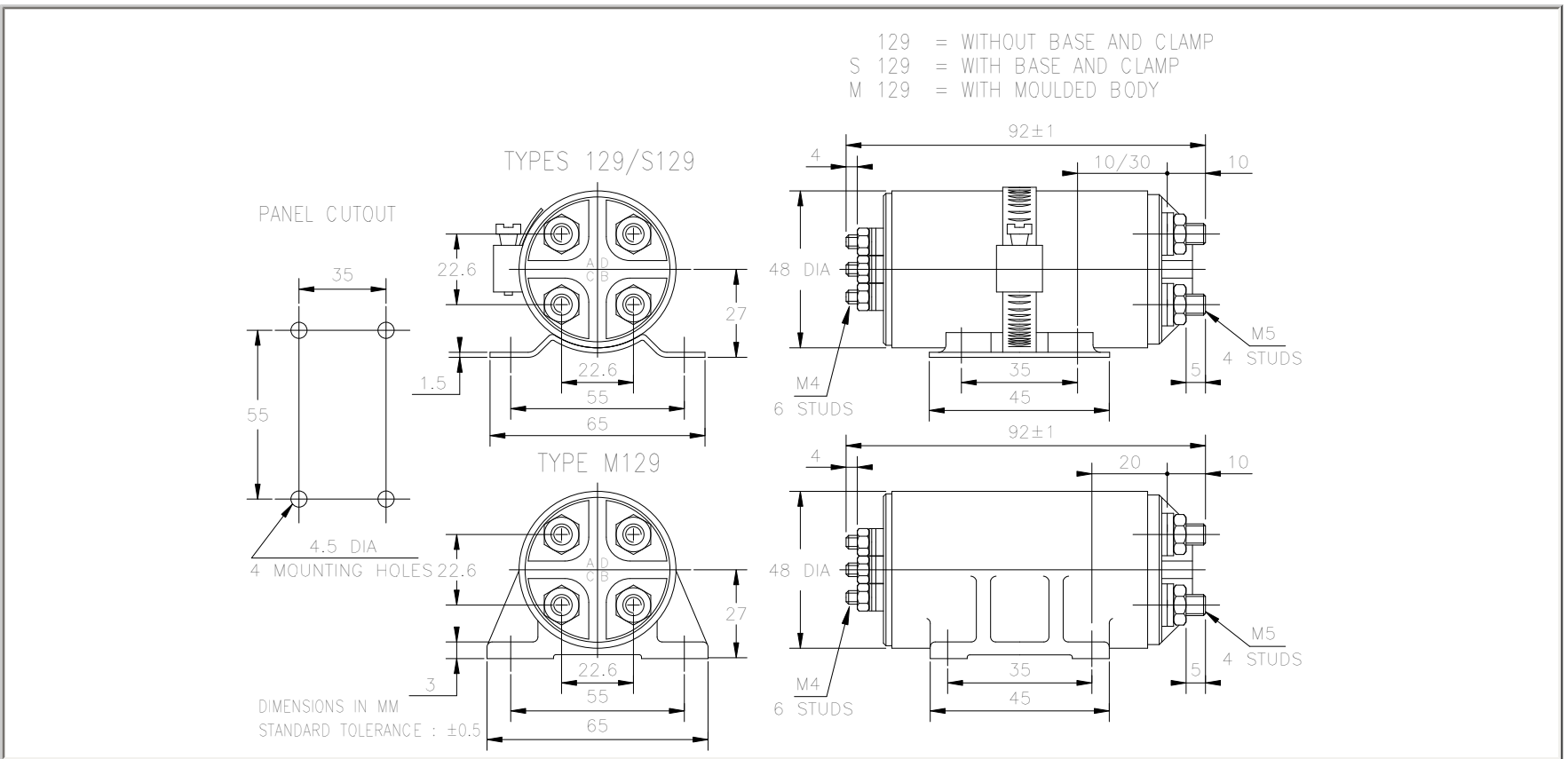
Data sheets are for initial product selection and comparison. Contact Leach International prior to choosing a component.

COIL CHARACTERISTICS AT 20 °C**SERIES 129**

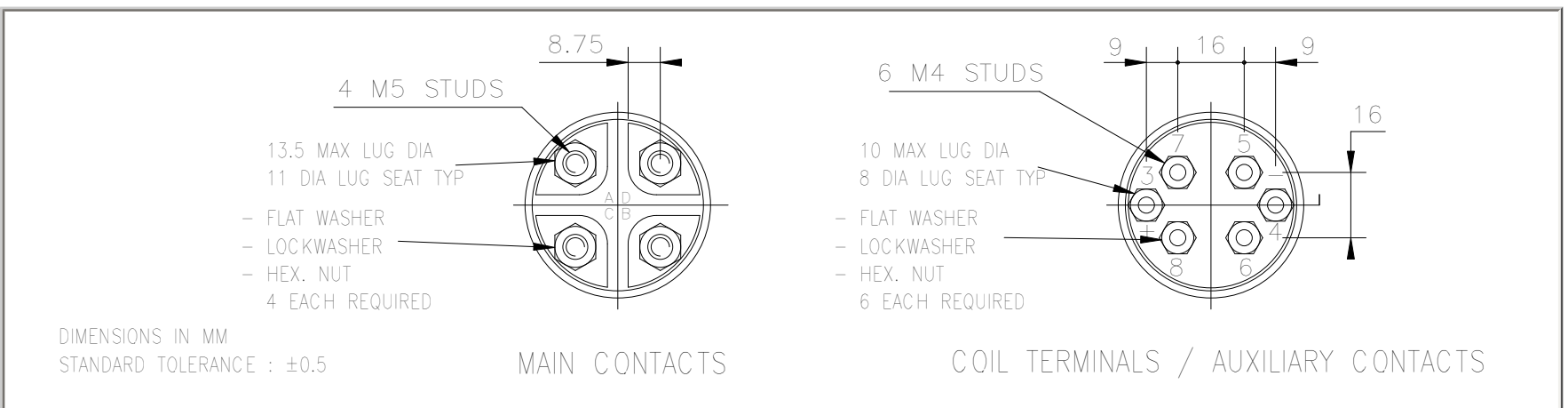
Nominal operating voltage	28 Vdc
Maximum operating voltage	32 Vdc
Maximum pickup voltage	18 Vdc
Drop-out voltage	2 Vdc min. to 8 Vdc max.
Cut-in current	10 A at 28 Vdc
Holding current	320 mA at 28 Vdc
Coil suppression (max Vdc)	-65

GENERAL CHARACTERISTICS

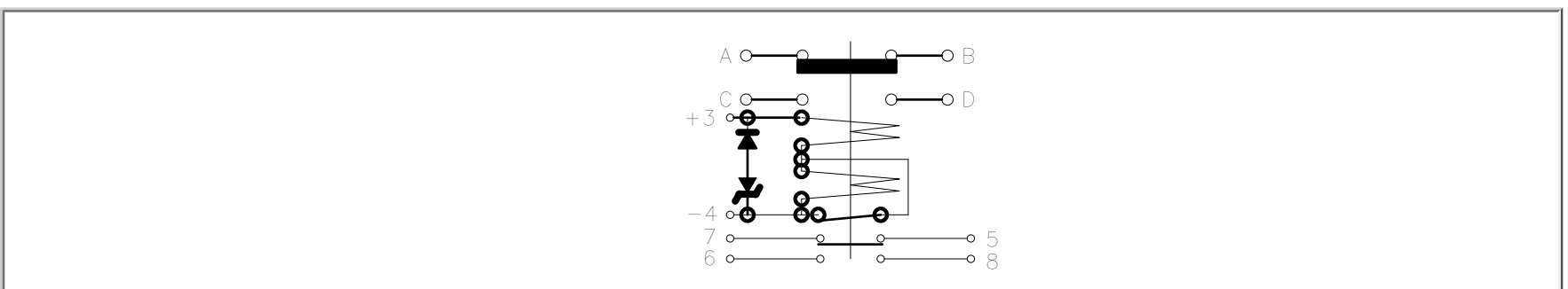
Temperature range	-55°C to +85°C [4]
Minimum operating cycles (life) at rated load	50,000 cycles
Dielectric strength at sea level	500 Vrms
Dielectric strength at altitude 25,000 m	300 Vrms
Insulation resistance at 500 Vdc	100 M Ω
Sinusoidal vibration	10 G / 5 to 2000 Hz
Shock	30 G / 11 ms
Maximum contact opening time under vibration and shock	10 μs
Maximum operate time at 28 Vdc	30 ms
Maximum release time at 28 Vdc	20 ms
Main contact voltage drop	
- Initial value	120 mV
- After endurance test	180 mV
Auxiliary contact voltage drop	
- Initial value	60 mV
- After endurance test	120 mV
Auxiliary contacts	
- Contact resistance (low level)	1 Ω
- I minimum	2 mA
Assembly torque	
- Main contact terminals	2.45 Nm
Coil and auxiliary contact terminals	1.2 Nm



TERMINAL TYPES



SCHEMATIC DIAGRAM



NUMBERING SYSTEM

