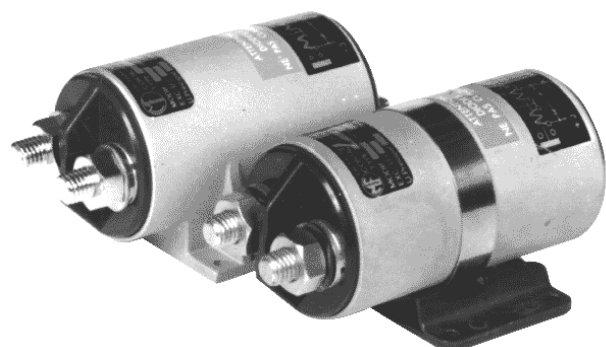


ENGINEERING DATA SHEET

SERIES 507

CONTACTOR
1PST-DM, 500 AMP/28 VDC



Letter 30243STPA

Permanent duty
Main contact **1PNO**
Coil supply **Direct current**
- Polarized and protected coil **See schematic diagram**
Meets the requirements of **AIR 7304**
AIR 8456B
AIR 9456
MIL 6106J

PRINCIPLE TECHNICAL CHARACTERISTICS

Contacts rated at **500 A / 28 Vdc**
Weight
- Ref. P/N: 507 **750 g ±10%**
- Ref. P/N: S507 **810 g ±10%**
- Ref. P/N: M507 **820 g ±10%**
Maximum size **121mm x 70mm x 62.5mm**
Dust proof metal can.

CONTACT ELECTRICAL CHARACTERISTICS

Contact rating per pole and load type	Load Current in Amps @28Vdc
Resistive	500 (In)
Inductive	300
Motor	500
Overload	8 In [1]
Rupture	10 In [2]
I minimum	In/10

Notes:

[1] 4000 Amps for 50 cycles; duty cycle: .2 sec on, 20 sec off.

[2] 5000 Amps for 50 cycles; duty cycle: .2 sec on, 20 sec off.

3. Additional models:

509 (1PST DM+Aux)

509I (1PST DM) intermitent duty

[4] Additional temperature ratings available.



Leach International
www.leachintl.com

North America
6900 Orangethorpe Ave.
P.O. Box 5032
Buena Park, CA 90622 USA

Tel: (01) 714-736-7599
Fax: (01) 714-670-1145

Europe, SA
2 Rue Goethe
57430 Sarralbe
France

Tel: (33) 3 87 97 98 97
Fax: (33) 3 87 97 84 04

Asia-Pacific Ltd.
20/F Shing Hing Commercial Bldg.
21-27 Wing Kut Street
Central, Hong Kong

Tel: (852) 2 191 2886
Fax: (852) 2 389 5803

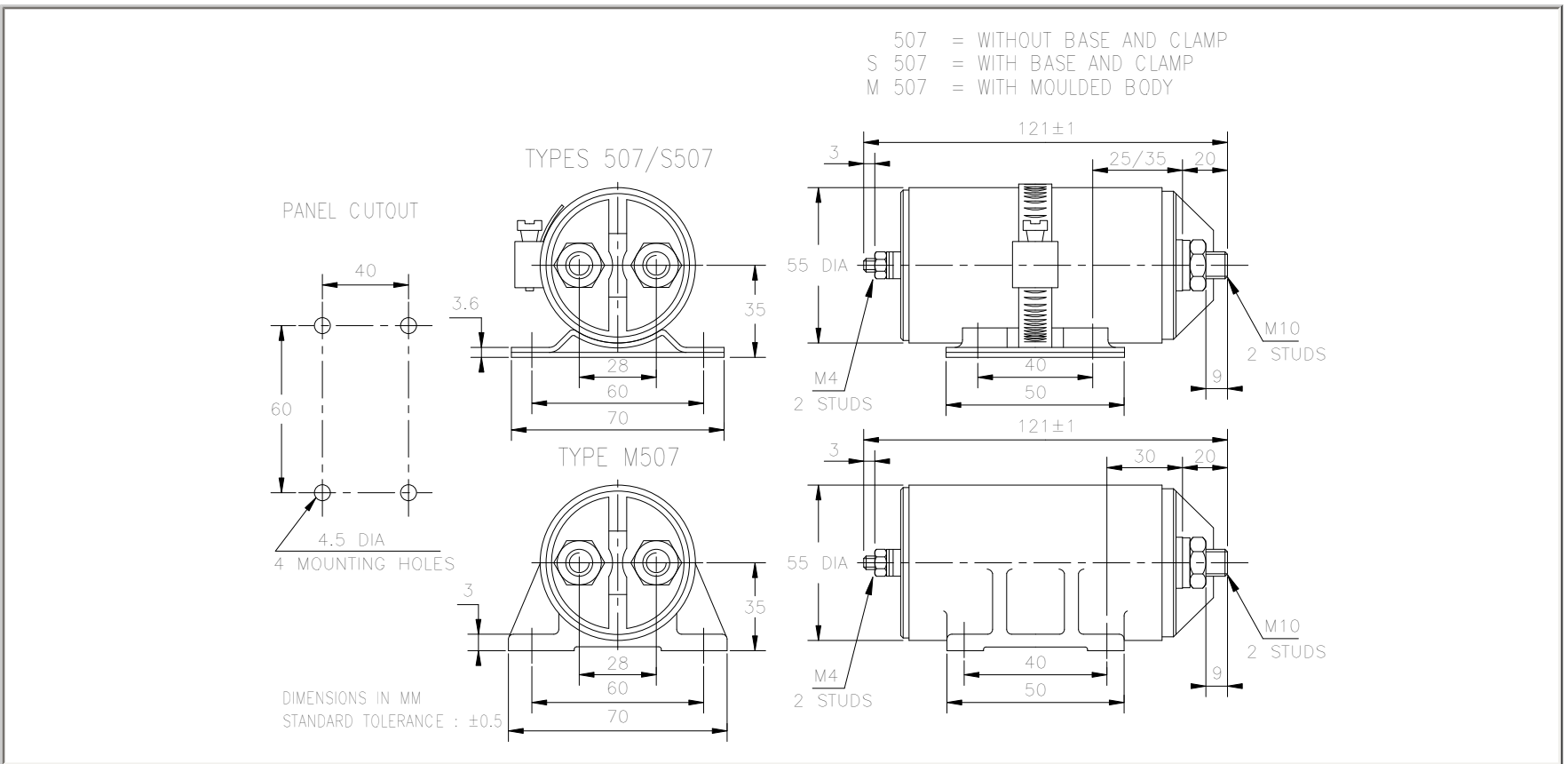
Data sheets are for initial product selection and comparison. Contact Leach International prior to choosing a component.

COIL CHARACTERISTICS AT 20 °C**SERIES 507**

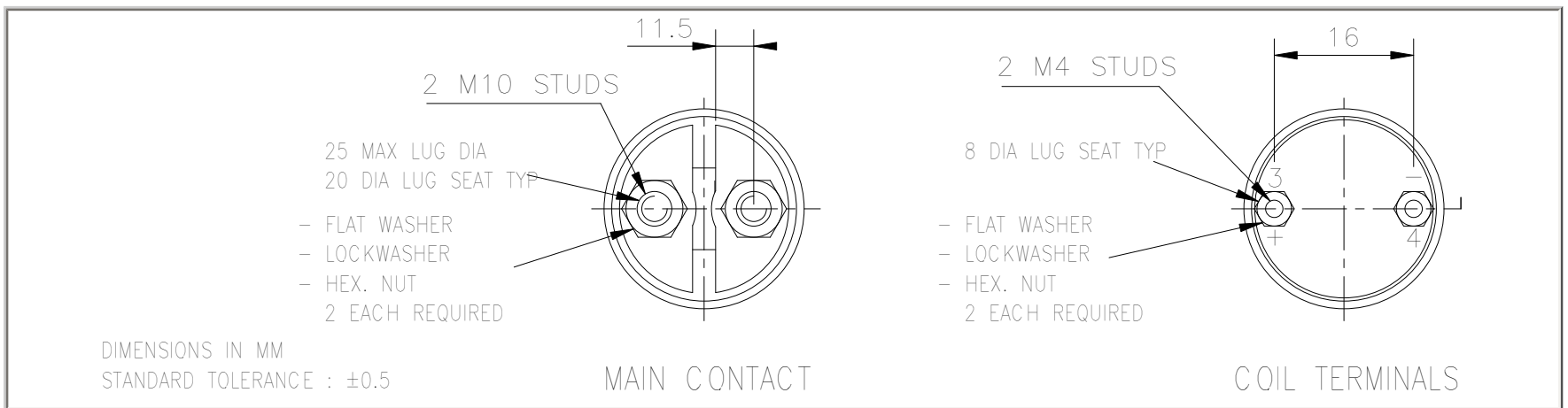
Nominal operating voltage	28 Vdc
Maximum operating voltage	32 Vdc
Maximum pickup voltage	18 Vdc
Drop-out voltage	1.5 Vdc min. 7 Vdc max.
Cut-in current	10 A at 28 Vdc
Holding current	300 mA at 28 Vdc
Coil suppression (max Vdc)	-65

GENERAL CHARACTERISTICS

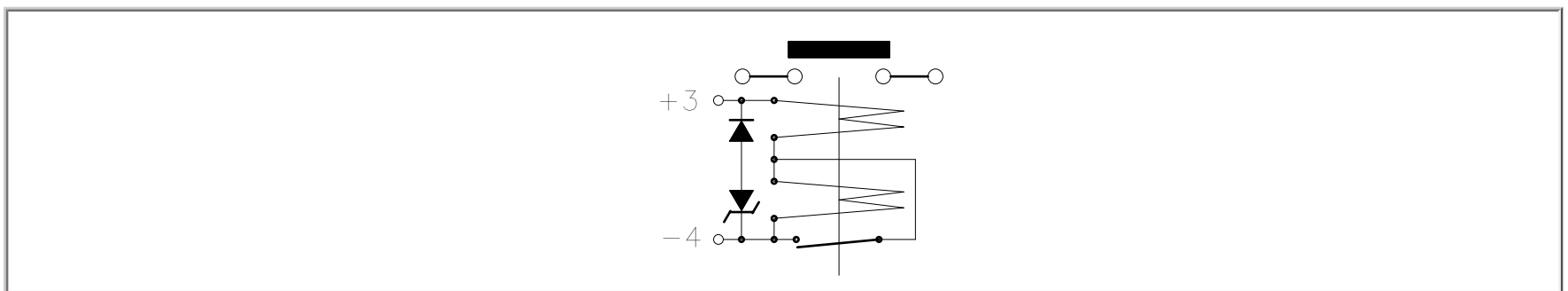
Temperature range	-55°C to +85°C [4]
Minimum operating cycles (life) at rated load	50,000 cycles
Dielectric strength at sea level	1250 Vrms
Dielectric strength at altitude 25,000 m	500 Vrms
Insulation resistance at 500 Vdc	100 M Ω
Sinusoidal vibration	10G / 5 to 2000 Hz
Shock	30G / 11 ms
Maximum contact opening time under vibration and shock	10 μs
Maximum operate time at 28 Vdc	20 ms
Maximum release time at 28 Vdc	15 ms
Main contact voltage drop	
- Initial value	120 mV
- After endurance test	180 mV
Assembly torque	
- Main contact terminals	14.7 Nm
- Coil terminals	1.2 Nm



TERMINAL TYPES



SCHEMATIC DIAGRAM



NUMBERING SYSTEM

