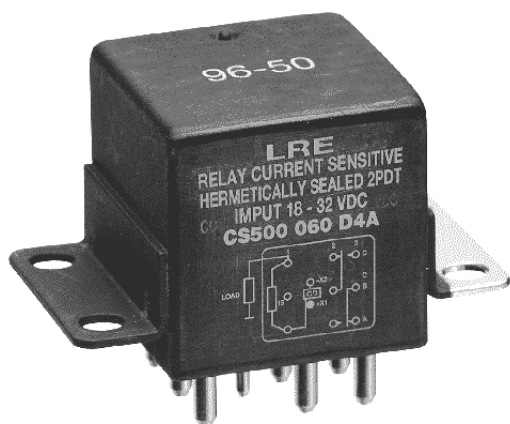


ENGINEERING DATA SHEET

CS500

CURRENT SENSING RELAY
2 PDT, 2 AMP



APPLICABLE SOCKET:

[S500](#)

Electronic current sensing relay

Contact arrangement **2 PDT**
Power supply **28 Vdc**

PRINCIPLE TECHNICAL CHARACTERISTICS

Contacts rated at **2 Amps / 28 Vdc**
Weight **<0.154lb**
Dimensions of case **1.73in x 1.01in x 1.02in max**
Hermetically sealed corrosion protected metal can

CONTACT ELECTRICAL CHARACTERISTICS

Minimum operating cycles	Contact rating per pole and load type	Load Current in Amps	
		@28Vdc	@115Vac/60-400Hz
100,000 cycles	resistive load	2	0.3
100,000 cycles	inductive load (L/R=5ms)	0.75	-
500,000 cycles	low level (30µA/30mV max)	-	-

NUMBERING SYSTEM

	CS500	XXX	-	XXX	-	A	-	X
Basic series designation								
1-Pick up current (3 digits)								
2-Drop out current (3 digits)								
3-Mounting style and terminal types (A,B,C)								
4-Internal shunt codes (A,B,C,D,E,F)								



Leach International
www.leachintl.com

North America
6900 Orangethorpe Ave.
P.O. Box 5032
Buena Park, CA 90622 USA

Tel: (01) 714-736-7599
Fax: (01) 714-670-1145

Europe, SA
2 Rue Goethe
57430 Sarralbe
France

Tel: (33) 3 87 97 98 97
Fax: (33) 3 87 97 84 04

Asia-Pacific Ltd.
20/F Shing Hing Commercial Bldg.
21-27 Wing Kut Street
Central, Hong Kong

Tel: (852) 2 191 2886
Fax: (852) 2 389 5803

Data sheets are for initial product selection and comparison. Contact Leach International prior to choosing a component.

PICK UP AND DROP OUT CURRENT

CS500

The first two digits are value in mAmps, last digit being number of zero.
 Example: 152 = 1500 mAmps = 1.5 Amp.

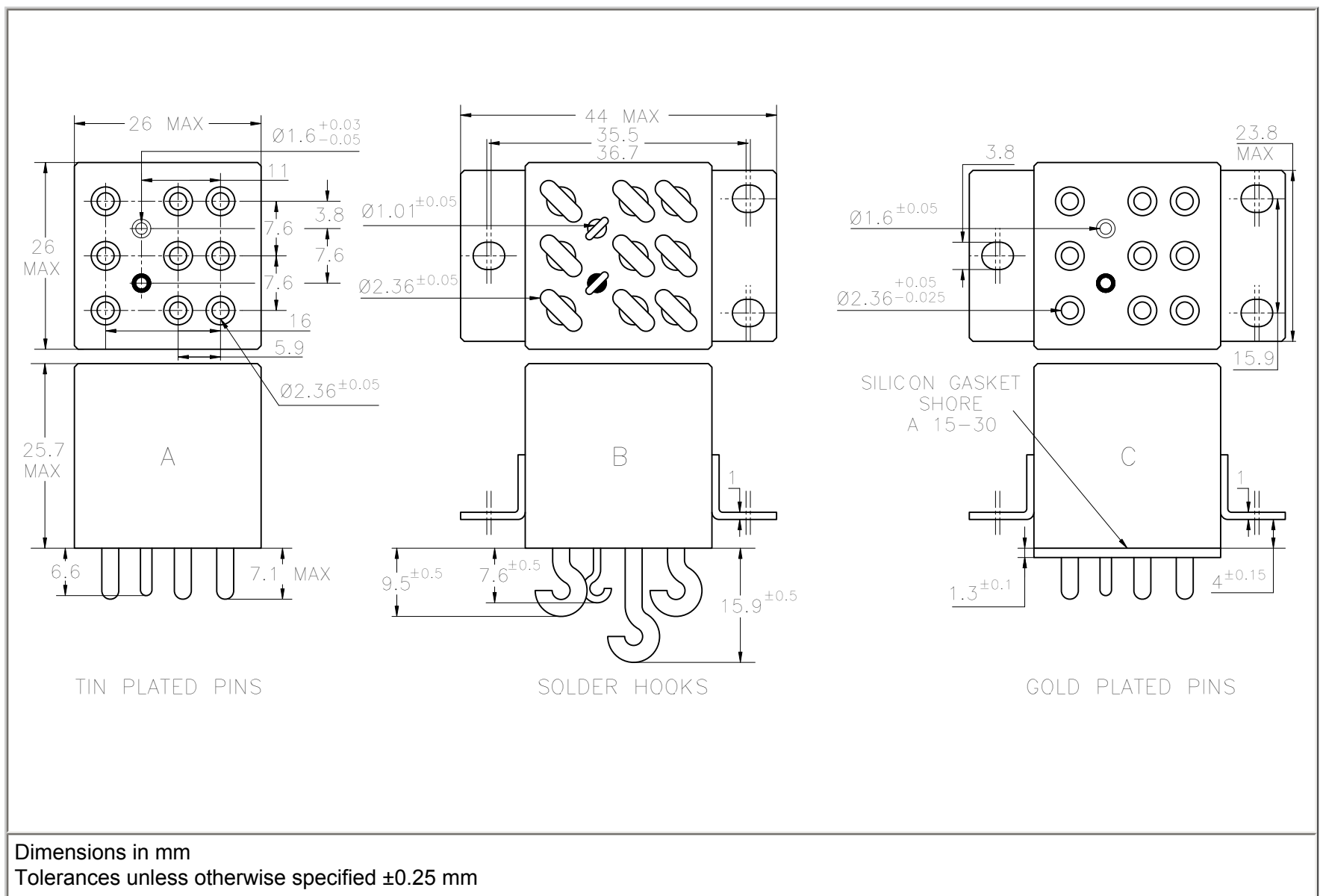
Pick up and drop out current have to be chosen within the limits given in the hereunder table.

TABLE OF SELECTION LIMITS FOR THE 4 STANDARD INTERNAL SHUNTS

I _p I pick up max	I _d I drop out min	I _p -I _d Minimum delta	I _p -I _d Maximum delta	I continuous max	Internal shunt Resistance	Code
5.5 A	80 mA	160 mA	4 A	6 A	50 m Ω	A
9 A	200 mA	400 mA	7 A	10 A	20 m Ω	B
13 A	400 mA	800 mA	10 A	14 A	10 m Ω	C
19 A	800 mA	1600 mA	14 A	20 A	5 m Ω	D
27 A	1600 mA	3200 mA	20 A	28 A	2.5 m Ω	E
49 A	4000 mA	8000 mA	31 A	50 A	1 m Ω	F

Accuracy of pick up and drop out current selected in the P/N shall be ±5% within the temperature range.

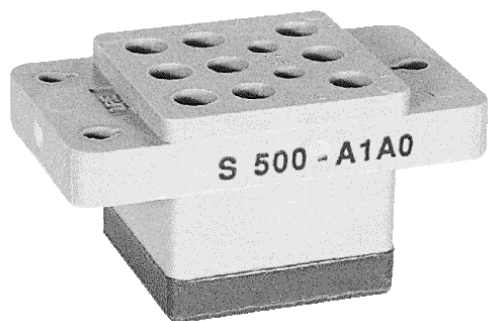
MOUNTING STYLES AND TERMINAL TYPES



ENGINEERING DATA SHEET

SERIES S500, S502

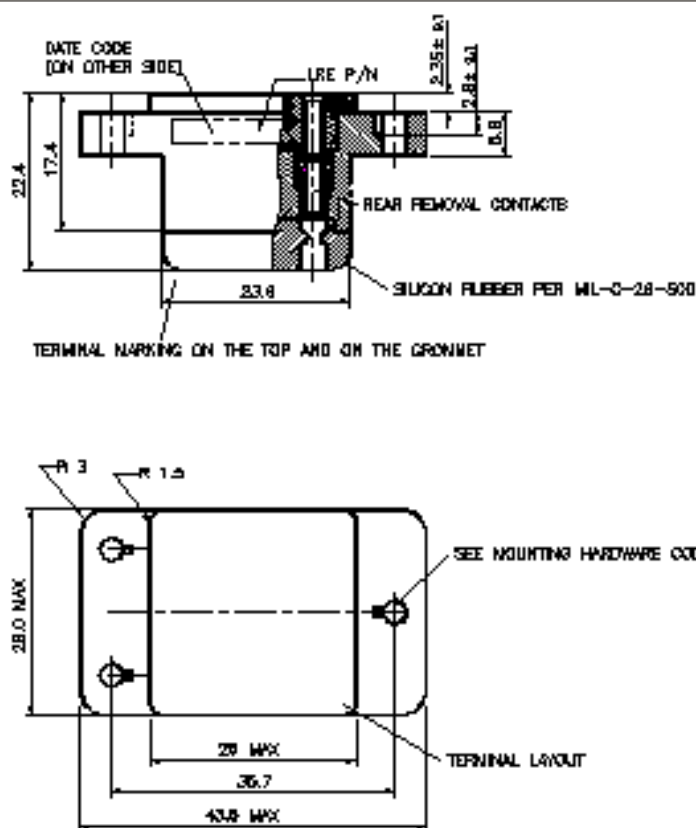
SOCKET FOR RELAYS
25 AMP



BASIC SOCKET SERIES DESIGNATION FOR:

SERIES CS500, T531

DIMENSIONS



GENERAL CHARACTERISTICS

Crimp tool contact	M 22520/1-01 with turret M 22520/1-02 or MS 3191-1.
Insertion and extraction tool	NAS 1664-12 / 1664-16 / 1664-20.
Weight	45g max.
Temperature range	-70° C to +125° C.

This connection is designed to the standards and requirements of MIL-S-12883
Contacts and hardware to be delivered disassembled in a plastic bag.
Tolerances, unless otherwise specified, ± 0.25 mm.



Leach International
www.leachintl.com

North America
6900 Orangethorpe Ave.
P.O. Box 5032
Buena Park, CA 90622 USA

Tel: (01) 714-736-7599
Fax: (01) 714-670-1145

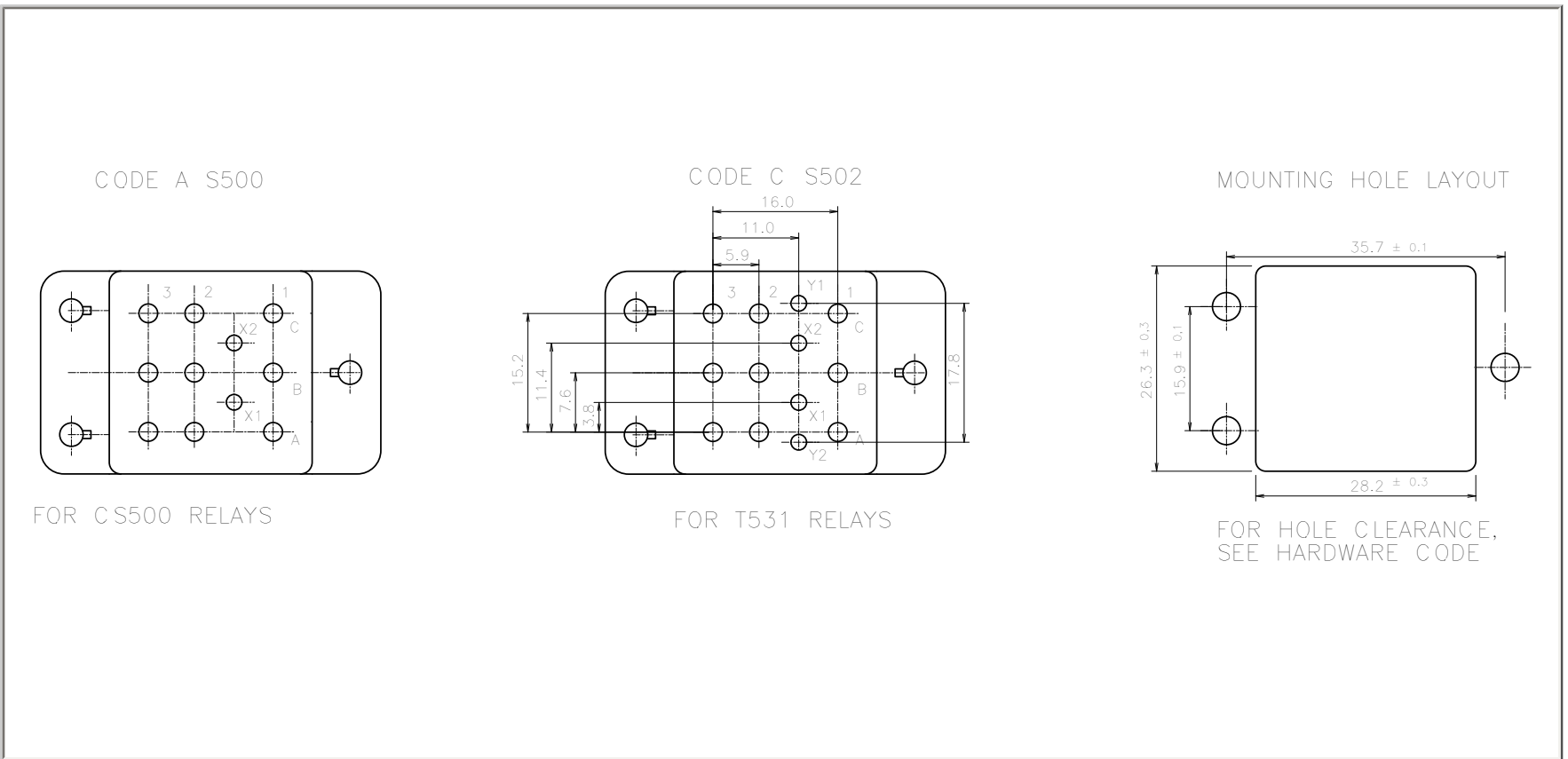
Europe, SA
2 Rue Goethe
57430 Sarralbe
France

Tel: (33) 3 87 97 98 97
Fax: (33) 3 87 97 84 04

Asia-Pacific Ltd.
20/F Shing Hing Commercial Bldg.
21-27 Wing Kut Street
Central, Hong Kong

Tel: (852) 2 191 2886
Fax: (852) 2 389 5803

Data sheets are for initial product selection and comparison. Contact Leach International prior to choosing a component.



MOUNTING HARDWARE

