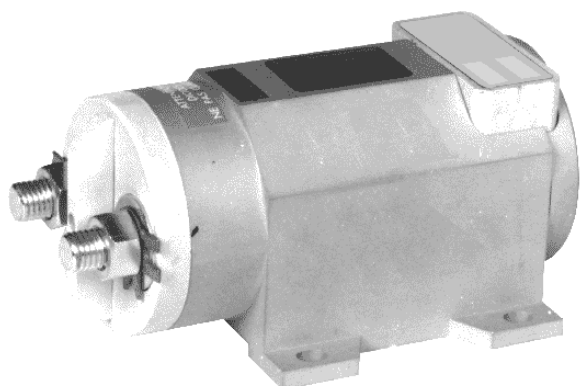


# ENGINEERING DATA SHEET

# M 707

## CONTACTOR

### 1PST-DM, 700 AMP/28 VDC



Permanent duty

Main contact

**1PNO**

Coil supply

**Direct current**

- Polarized and protected coil

**See schematic diagram**

Meets the requirements of

**AIR 7304**

**AIR 8456B**

**AIR 9456**

**MIL 6106J**

### PRINCIPLE TECHNICAL CHARACTERISTICS

Contacts rated at

**700 A / 28 Vdc**

Weight

- Ref. P/N: M707

**1950 g ±10%**

Maximum size

**162mm x 98mm x 76.5mm**

Dust proof metal can.

### CONTACT ELECTRICAL CHARACTERISTICS

Contact rating per pole and load type	Load Current in Amps @28Vdc
Resistive	700 (In)
Inductive	420
Motor	700
Overload	8 In [1]
Rupture	10 In [2]
I minimum	In/10

#### Notes:

[1] 5600 Amps for 50 cycles; duty cycle: .2 sec on, 20 sec off.

[2] 7000 Amps for 50 cycles; duty cycle: .2 sec on, 20 sec off.

3. Additional models:

**M708** (1PST DM+Aux)

**M708I** (1PST DM+Aux) intermittent duty

[4] Additional temperature ratings available.



**Leach International**

[www.leachintl.com](http://www.leachintl.com)

#### North America

6900 Orangethorpe Ave.  
P.O. Box 5032  
Buena Park, CA 90622 USA

Tel: (01) 714-736-7599

Fax: (01) 714-670-1145

#### Europe, SA

2 Rue Goethe  
57430 Sarralbe  
France

Tel: (33) 3 87 97 98 97

Fax: (33) 3 87 97 84 04

#### Asia-Pacific Ltd.

20/F Shing Hing Commercial Bldg.  
21-27 Wing Kut Street  
Central, Hong Kong

Tel: (852) 2 191 2886

Fax: (852) 2 389 5803

Data sheets are for initial product selection and comparison. Contact Leach International prior to choosing a component.

**COIL CHARACTERISTICS AT 20 °C****M 707**

Nominal operating voltage	28 Vdc
Maximum operating voltage	32 Vdc
Maximum pickup voltage	18 Vdc
Drop-out voltage	1.5 Vdc min. 7 Vdc max.
Cut-in current	6 A at 28 Vdc
Holding current	340 mA at 28 Vdc
Coil suppression (max Vdc)	-65

**GENERAL CHARACTERISTICS**

Temperature range	-55°C to +85°C [4]
Minimum operating cycles (life) at rated load	50,000 cycles
Dielectric strength at sea level	500 Vrms
Dielectric strength at altitude 25,000 m	300 Vrms
Insulation resistance at 500 Vdc	100 M Ω
Sinusoidal vibration	10G / 5 to 2000 Hz
Shock	30G / 11 ms
Maximum contact opening time under vibration and shock	10 μs
Maximum operate time at 28 Vdc	30 ms
Maximum release time at 28 Vdc	20 ms
Main contact voltage drop	
- Initial value	120 mV
- After endurance test	180 mV
Assembly torque	
- Main contact terminals	14.7 Nm
- Coil terminals	1.2 Nm

