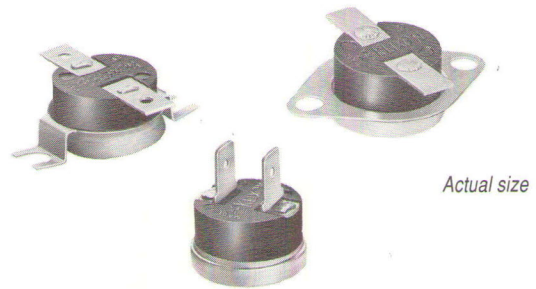


# 7BT Series

## High Capacity, Environmentally Sealed

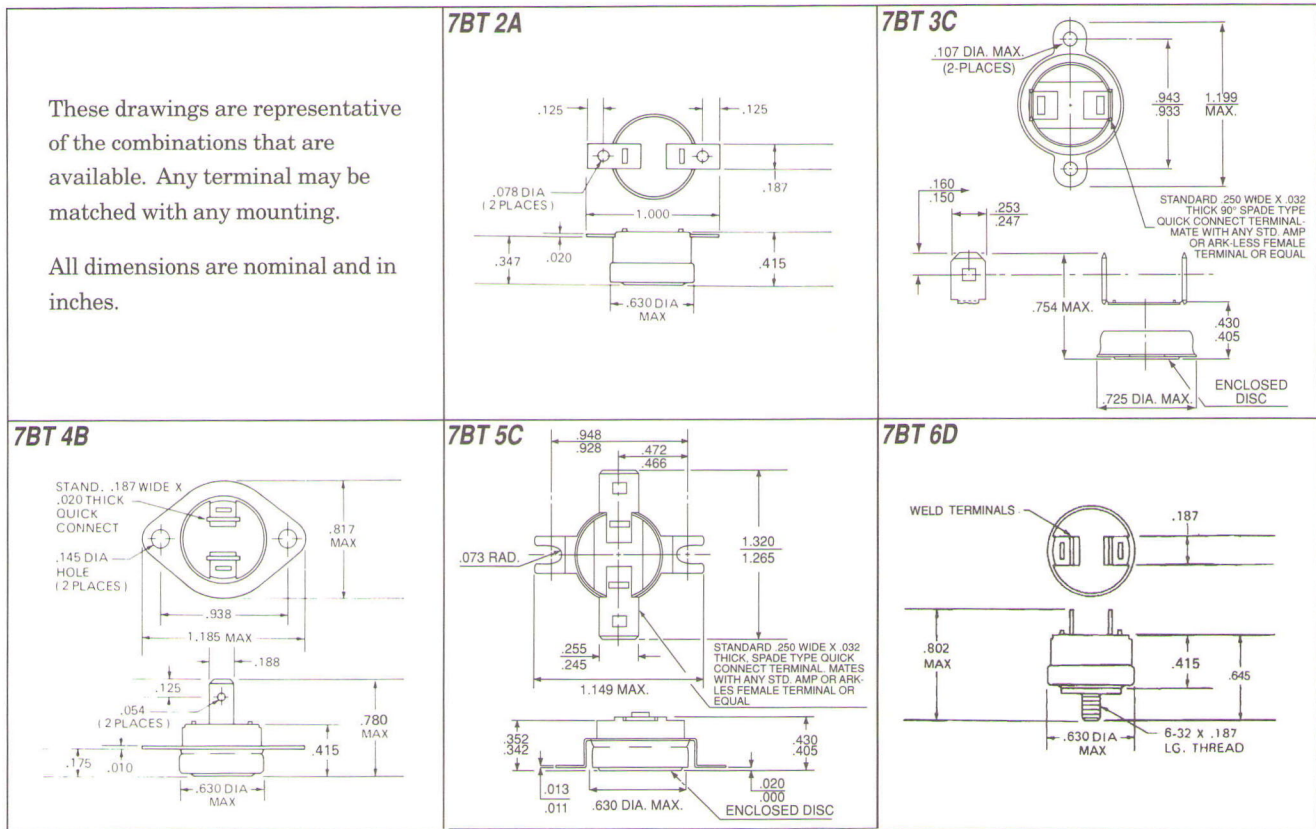
Commercial

- Reliable, snap-action switching
- Tamperproof, preset calibration
- Normally open or normally closed
- UL recognized, file #34618, see page 36 for details
- CSA recognized, file #LR24458, see page 36 for details
- VDE recognized, file #4464.4-451-1/A-1, see page 36 for details



These drawings are representative of the combinations that are available. Any terminal may be matched with any mounting.

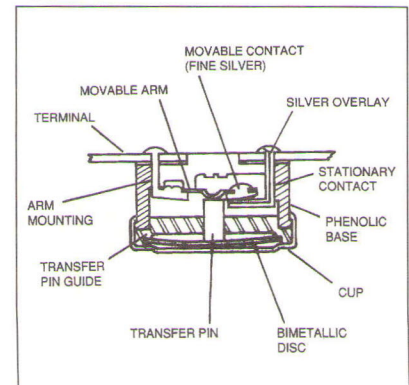
All dimensions are nominal and in inches.



If your application requires a combination of features which are not mentioned in this bulletin please contact our marketing department. The features included here are only a representative sampling of the combinations available in the 7BT series.

VDE recognized  
(with factory surveillance)  
Type 7BT - XXX - XXX  
10 (1.66)  
250 ~  
Class II, T175

### Typical Cross Section View



## Performance Characteristics

### Switch Action

SPST (snap-action)

### Contact Ratings (Resistive) 100,000 Cycles

Voltage	120VAC	240 VAC	30 VDC
Amperes	15	7.5	10

Based on standard differential

### Dielectric Strength

2000 VAC, rms 60 cycles for 1 min.

### Weight

4 grams

### Temperature

(Use table at right for common operating temperatures).

### Ambient Temperature Range:

-20°F to +350°F, (-28.9°C to 176.7°C)

### Operating temperature

Temperature at which normally closed contacts open or normally open contacts close.

### Tolerance

Allowable range above and below setpoint and reset temperatures.

### Differential

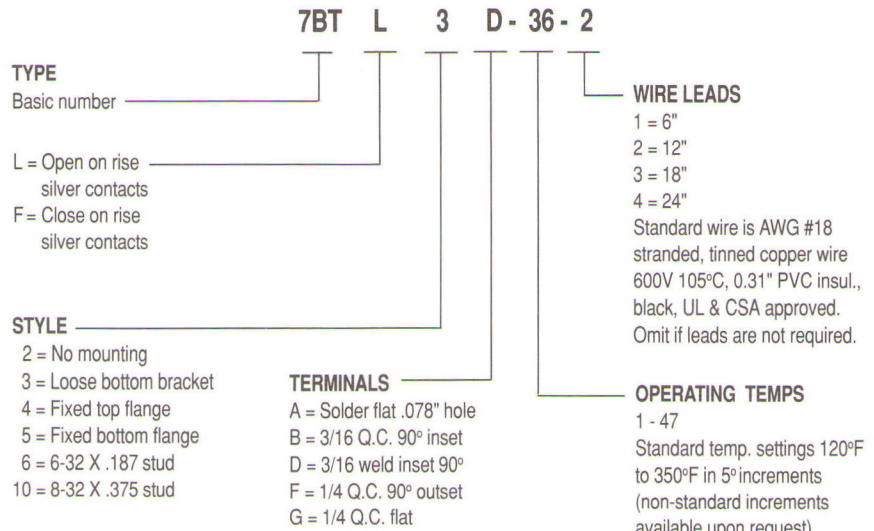
Subtract the differential from the operating temperature to determine the temperature at which the contacts will return to the normal position (reset temperature).

### Qualifications

UL/CSA/VDE recognized  
see page 36 for details

## Part Numbering System

To facilitate the ordering of 7BT thermostats to your specifications use the part number code below. The code permits you to call out a complete production part number at the time of component selection.



Dash #	Oper. Temp.		Differential		Tolerance	
	°F	°C	°F	°C	±°F	±°C
*	30	-1.1	20	11.1	5	2.8
*	40	4.4	20	11.1	5	2.8
*	50	10.0	20	11.1	5	2.8
*	60	15.6	20	11.1	5	2.8
*	70	21.1	20	11.1	5	2.8
*	80	26.7	20	11.1	5	2.8
*	90	32.2	20	11.1	5	2.8
*	100	37.8	20	11.1	5	2.8
*	110	43.3	20	11.1	5	2.8
1	120	48.9	20	11.1	5	2.8
2	125	51.7	20	11.1	5	2.8
3	130	54.4	20	11.1	5	2.8
4	135	57.2	20	11.1	5	2.8
5	140	60.0	20	11.1	5	2.8
6	145	62.8	20	11.1	5	2.8
7	150	65.6	20	11.1	5	2.8
8	155	68.3	20	11.1	5	2.8
9	160	71.1	20	11.1	5	2.8
10	165	73.9	20	11.1	5	2.8
11	170	76.7	20	11.1	5	2.8
12	175	79.4	20	11.1	5	2.8
13	180	82.2	20	11.1	5	2.8
14	185	85.0	20	11.1	5	2.8
15	190	87.8	20	11.1	5	2.8
16	195	90.6	20	11.1	5	2.8
17	200	93.3	20	11.1	5	2.8
18	205	96.1	30	16.7	8	4.4
19	210	98.9	30	16.7	8	4.4

Dash #	Oper. Temp.		Differential		Tolerance	
	°F	°C	°F	°C	±°F	±°C
20	215	101.7	30	16.7	8	4.4
21	220	104.4	30	16.7	8	4.4
22	225	107.2	30	16.7	8	4.4
23	230	110.0	30	16.7	8	4.4
24	235	112.8	30	16.7	8	4.4
25	240	115.6	30	16.7	8	4.4
26	245	118.3	30	16.7	8	4.4
27	250	121.1	30	16.7	8	4.4
28	255	123.9	30	16.7	8	4.4
29	260	126.7	30	16.7	8	4.4
30	265	129.4	30	16.7	8	4.4
31	270	132.2	30	16.7	8	4.4
32	275	135.0	30	16.7	8	4.4
33	280	137.8	30	16.7	8	4.4
34	285	140.6	30	16.7	8	4.4
35	290	143.3	30	16.7	8	4.4
36	295	146.1	30	16.7	8	4.4
37	300	148.9	30	16.7	8	4.4
38	305	151.7	40	22.2	12	6.7
39	310	154.4	40	22.2	12	6.7
40	315	157.2	40	22.2	12	6.7
41	320	160.0	40	22.2	12	6.7
42	325	162.8	40	22.2	12	6.7
43	330	165.6	40	22.2	12	6.7
44	335	168.3	40	22.2	12	6.7
45	340	171.1	40	22.2	12	6.7
46	345	173.9	40	22.2	12	6.7
47	350	176.7	40	22.2	12	6.7

Consult factory if desired operating temperature does not appear in the table.

\* Dash number does not apply. Order by operating temperature.