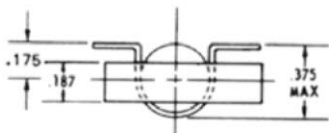
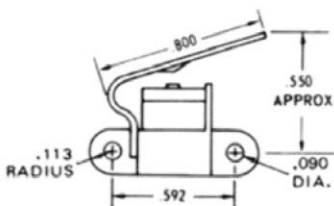


# Klixon® AT Leaf Actuated Package Designs

- Available in a wide variety of packaging styles
- Packaging options are available for one, two, or multiple poles
- Custom packaging is available to suit your needs, whatever they may be

Listed below is information about a popular device in this category.



Part Numbers	Typical Actuation Characteristics
<b>AT292</b>	Maximum Actuating Force (STP) 24 oz.
<b>AT290</b>	
<b>3AT41</b>	Minimum Release Force (STP) 1 oz.
<b>4AT44</b>	
<b>4AT46</b>	Plunger Seal No
<b>10AT31</b>	
<b>10AT28</b>	Maximum Pretravel .250 inch
<b>3AT43</b>	Maximum Movement Differential .050 inch
Pictured:	Minimum Overtravel .015 inch
<b>AT289</b>	
<b>AT291</b>	Positive Overtravel Stop Yes
<b>3AT40</b>	
<b>3AT42</b>	
<b>3AT43</b>	
<b>4AT45</b>	
<b>10AT27</b>	
<b>10AT30</b>	Maximum Force on Actuator 5 lb.