

Klixon® AT Single-Pole Package Designs

- Available in a wide variety of packaging styles
- Packaging options are available for one, two, or multiple poles
- Custom packaging is available to suit your needs, whatever they may be

Listed below is information about popular devices in this category.



Single-Pole, Flange Mounted Package Designs

10AT377
10AT378

Typical Actuation Characteristics

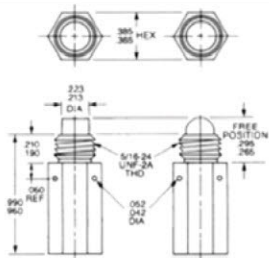
Maximum Actuating Force (STP)	7 lb.
Minimum Release Force (STP)	1 lb.
Button Seal / MIL-PLF-8805	Yes
Maximum Pretravel	.040 inch
Maximum Movement Differential	.010 inch
Minimum Overtravel	.080 inch
Positive Overtravel Stop	Yes
Maximum Force on Actuator	30 lb.

Single-Pole, Unsealed Button Package Designs

AT414
AT415
10AT384
10AT385
AT395
AT396
10AT363
10AT364

Pictured:

AT344
AT394
10AT361
10AT362



Typical Actuation Characteristics

	AT	10AT
Maximum Actuating Force (STP)	20 oz.	30 oz.
Minimum Release Force (STP)	1 oz.	4 oz.
Plunger Seal	No	No
Maximum Pretravel	.010 inch	.010 inch
Maximum Movement Differential	.005 inch	.005 inch
Minimum Overtravel	.125 inch	.125 inch
Positive Overtravel Stop	No	No
Maximum Force on Actuator	10 lb.	10 lb.

All switches are hermetically sealed at the basic switch. The button assembly is not sealed.

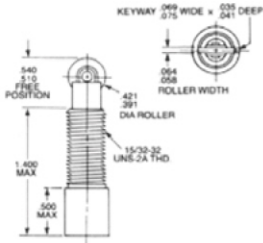
Single-Pole, Sealed Button Package Designs

AT269
10AT76
AT268
10AT7

Photo Unavailable

Single-Pole, Threaded Body, Sealed and Unsealed Button Package Designs

AT400
AT401
AT404
10AT366
10AT367
10AT369
10AT370
AT402
AT405
10AT368
10AT371



Typical Actuation Characteristics

	Unsealed AT	Sealed AT	Unsealed 10AT	Sealed 10AT
Maximum Actuating Force (STP)	20 lb.	6.5 lb.	30 lb.	7 lb.
Minimum Release Force (STP)	1 oz.	1.5 oz.	4 oz.	1.5 oz.
Button Seal / MIL-PLF-8805	No	Yes	No	Yes
Maximum Pretravel	.010 inch	.020 inch	.010 inch	.020 inch
Maximum Movement Differential	.005 inch	.005 inch	.005 inch	.005 inch
Minimum Overtravel	.125 inch	.125 inch	.125 inch	.125 inch
Positive Overtravel Stop	Yes	Yes	Yes	Yes
Maximum Force on Actuator	30 lb.	30 lb.	30 lb.	30 lb.