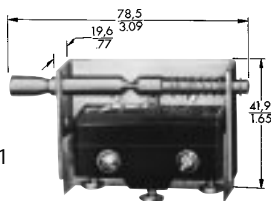


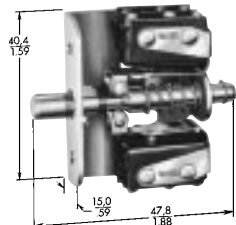
# Manual Switches

## Door Switches

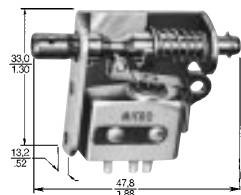
# AC Series



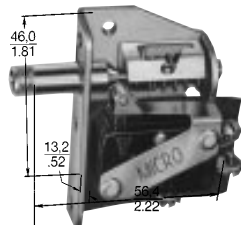
Style 1



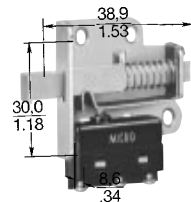
Style 2



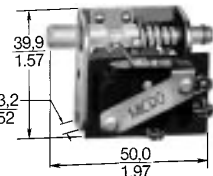
Style 3



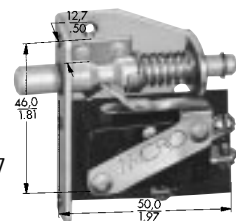
Style 4



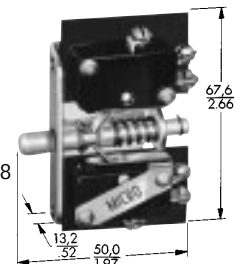
Style 5



Style 6



Style 7



Style 8

### FEATURES

- Automatically cut power when service door or drawer is opened, helping protect personnel and equipment.
- Enables circuit testing with power On by manually pulling rod actuator to maintained-On position. (Closing door or drawer resets switch.)

### CHARACTERISTICS:

F.P. — Free Position;  
O.P. — Operating Position;  
D.P. — Depressed Position.

### ELECTRICAL RATINGS

A	15 amps, 125, 250 or 480 VAC; 1/2 amp, 125 VDC; 1/4 amp, 250 VDC.
B	5 amps, 125 or 250 VAC; 30 Vdc ind., 3 amps (sea level) and 2.5 amps (50,000 ft.); res., 5 amps (sea level and 50,000 ft.); max. inrush 25 amps.
C	15 amps, 125 or 250 VAC; 1/2 amp, 125 VDC; 1/4 amp, 250 VDC; 1/3 hp, 125 or 250 VAC.

### ORDER GUIDES WITH STEEL ROD ACTUATORS

Style No.	Description	Basic Switch	Elec. Rating	Catalog Listing	F.P. max. mm in.	O.P. min. mm in.	D.P. max. mm in.
1	15 amps, SPDT	BZ	A	1AC2	11,1 .438	6,35 .250	3,18 .125
2	5 amps, Four SPDT ckts.	SM(4)	B	8AC1	9,53 .375	5,16 .203	3,18 .125
3	Three 6-foot leads. Sealed basic switches. 5 amps, SPDT.	SE	B	9AC4	9,53 .375	5,16 .203	3,18 .125
3	Two 3-foot leads. Sealed basic switches. 5 amps, SPST-N.O.	SE	B	9AC12-3	9,53 .375	5,16 .203	3,18 .125
4	Can be reset without momentary ckt. break. 15 amps, SPDT.	V3	C	13AC1	15,9 .625	12,3 .485	6,68 .263
5	Miniature size. 5 amps, SPDT.	SM	B	17AC1-T 17AC18-T (MS16106-4)	9,53 .375	5,59 .220	4,45 .175
6	Tapped hole in end of actuator rod. 15 amps, SPDT.	V3	C	2AC59 (MS16106-1)	9,53 .375	5,16 .203	3,18 .125

### WITH HIGH STRENGTH THERMOPLASTIC ROD ACTUATORS\*

2	5 amps, Four SPDT ckts.	SM(4)	B	8AC9 (MS16106-3)	9,53 .375	5,16 .203	3,18 .125
6	15 amps. SPDT.	V3	C	22AC1	9,53 .375	5,16 .203	3,18 .125
6	Tapped hole in end of actuator rod. 15 amps, SPDT.	V3	C	22AC2	9,53 .375	5,16 .203	3,18 .125
7	15 amps. SPDT.	V3	C	23AC1	9,53 .375	5,16 .203	3,18 .125
7	Tapped hole in end of actuator rod. 15 amps, SPDT.	V3	C	23AC2	9,53 .375	5,16 .203	3,18 .125
8	15 amps. Two SPDT ckts.	V3(2)	C	24AC1	9,53 .375	4,75 .187	3,18 .125
8	Tapped hole in end of actuator rod. 15 amps. Two SPDT ckts.	V3(2)	C	24AC2 4AC54** (MS16106-2) 4AC55 (MS16106-5)	9,53 .275	4,75 .187	3,18 .125

\* Not for use above 85°C (+185°F). Use steel actuators at higher temperatures. For additional catalog listings, contact your nearest MICRO SWITCH Sales Office.

\*\* Both switches operate on pull stroke, only one switch operates on push (reset) stroke.

Manuals