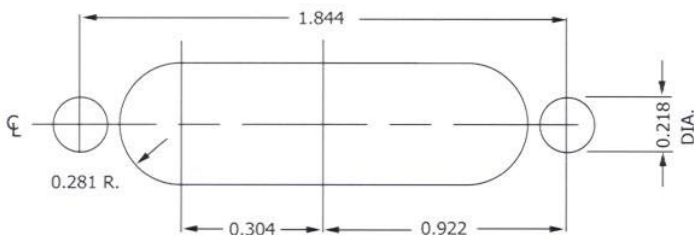


CONTACT DATA	CHASSIS MOUNTING DATA			
	CHASSIS THIC. KNESS	X-DIMENSION		
SOLDER CUP	$\frac{3}{16}$	.12		HRE-1
	$\frac{3}{32}$	.09		HRE-31
	$\frac{1}{8}$	.06	HRE-41	HRE-42
EYELET	$\frac{3}{16}$	.12		HRE-5
	$\frac{3}{32}$	.09		HRE-35
	$\frac{1}{8}$	.06	HRE-45	HRE-46
TURRET	$\frac{3}{16}$	.12		HRE-3
	$\frac{3}{32}$	.09		HRE-33
	$\frac{1}{8}$	.06	HRE-43	HRE-44
TAPER PIN	$\frac{3}{16}$	.12		HRE-7
	$\frac{3}{32}$	.09		HRE-37
	$\frac{1}{8}$	.06	HRE-47	HRE-48



RECOMMENDED CHASSIS CUT-OUT

## ELECTRICAL

Wire Size:

- Solder Cup Type . . . . . One #20 AWG
  - Turret Type . . . . . Two #20 AWG or Three #22 AWG
  - Eyelet Type . . . . . Two #20 AWG or Three #22 AWG
  - Taper Type . . . . . One AMP "37" Taper Receptacle
- Current Rating . . . . . 7.5 Amperes

Withstanding Voltage:

- Contact to Contact Sea Level . . . . . 2700 VRMS Minimum
- Contact to Ground Sea Level . . . . . 6300 VRMS Minimum
- Contact to Contact 70,000 Ft. . . . . 560 VRMS Minimum
- Contact to Ground 70,000 Ft. . . . . 1065 VRMS Minimum

## MECHANICAL

- Creepage Between Contacts . . . . . 0.16 Minimum
- Air Space Between Contacts . . . . . 0.09 Minimum
- Contacts to Accept 0.040 ± 0.001 DIA. Pins

Contacts:

- Spring Temper Grade "A" Phosphor Bronze, or Heat Treated Beryllium Copper
- Gold Plated over Copper or Nickel Plate

Mounting Hardware:

- Special Studs, Screws, Lockwashers, and Nuts

Insulation Material:

- Choice of "MIL Approved" Thermosetting Insulations (See Page 45)

- Temperature Ratings: -65°C to +125°C
- Weight of Socket with Mountings: 0.69 oz.