

### ELECTRICAL

#### Wire Size:

Solder Cup Type ..... One #16 AWG or Two #20 AWG  
 Turret Type ..... Two #20 AWG or Three #20 AWG

Current Rating ..... 13 Amperes

#### Withstanding Voltage:

Contact to Contact Sea Level ..... 1500 VRMS Minimum  
 Contact to Ground Sea Level ..... 2700 VRMS Minimum  
 Contact to Contact 70,000 Ft. .... .375 VRMS Minimum  
 Contact to Ground 70,000 Ft. .... .560 VRMS Minimum

### MECHANICAL

Creepage Between Contacts ..... 0.11 Minimum  
 Air Space Between Contacts ..... 0.05 Minimum  
 Contacts to Accept 0.062 ± 0.001 DIA. Pins

#### Contacts:

Spring Temper Grade "A" Phosphor Bronze, or Heat Treated Beryllium Copper  
 Gold Plated over Copper or Nickel Plate

#### Mounting Hardware:

Special Studs, Screws, Lockwashers, and Nuts

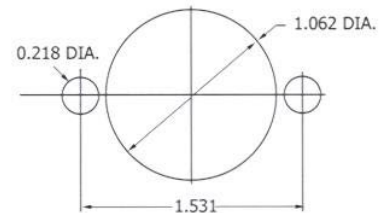
#### Insulation Material:

Choice of "MIL Approved" Thermosetting Insulations (See Page 45)

Temperature Ratings: -65°C to +125°C

Weight of Socket with Mountings: 1.39 oz.

CONTACT DATA	CHASSIS MOUNTING DATA				
	CHASSIS THICKNESS	X-DIMENSION	BELOW CHASSIS	BELOW CHASSIS	ABOVE CHASSIS
 SOLDER CUP	1/32	.12		HRH - 1	HRH - 2
	3/32	.09		HRH - 31	HRH - 32
	1/8	.06		HRH - 41	HRH - 42
 TURRET	1/32	.12		HRH - 3	HRH - 4
	3/32	.09		HRH - 33	HRH - 34
	1/8	.06		HRH - 43	HRH - 44
 WIRE WRAP	0.045 SQ.	1/32	.12	HRH - 9	
		3/32			
		1/8			



RECOMMENDED CHASSIS CUT-OUT