

ELECTRICAL

Wire Size:

- Solder Cup Type One #20 AWG
- Eyelet Type Two #20 AWG or Three #22 AWG

Current Rating 7.5 Amperes

Withstanding Voltage:

- Contact to Contact Sea Level 2700 VRMS Minimum
- Contact to Ground Sea Level 2700 VRMS Minimum
- Contact to Contact 70,000 Ft. 560 VRMS Minimum
- Contact to Ground 70,000 Ft. 560 VRMS Minimum

MECHANICAL

- Creepage Between Contacts 0.16 Minimum
- Air Space Between Contacts 0.10 Minimum
- Contacts to Accept 0.040 ± 0.001 DIA. Pins

Contacts:

- Spring Temper Grade "A" Phosphor Bronze, or Heat Treated Beryllium Copper
- Gold Plated over Copper or Nickel Plate

Mounting Hardware:

- Special Studs, Screws, Lockwashers, and Nuts

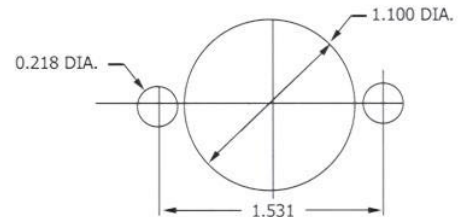
Insulation Material:

- Choice of "MIL Approved" Thermosetting Insulations (See Page 45)

Temperature Ratings: -65°C to +125°C

Weight of Socket with Mountings: 0.95 oz.

CLOSED ENTRY	CONTACT DATA	CHASSIS MOUNTING DATA				
		CHASSIS T.H.C. KNEES	X-DIMENSION	BELOW CHASSIS		ABOVE CHASSIS
	SOLDER CUP	1/16	.12		HRSB - 1K	
		3/32	.09		HRSB - 31K	
		1/8				
	EYELET	1/16	.12		HRSB - 5K	HRSB - 6K
		3/32	.09		HRSB - 35K	
		1/8	.06	HRSB - 45K		
	STRAIGHT	1/16	.12		HRSB - 4K	HRSB - 10K
		3/32				
		1/8				



RECOMMENDED CHASSIS CUT-OUT