

INDUSTRIAL - ENVIRONMENTALLY SEALED SWITCHES

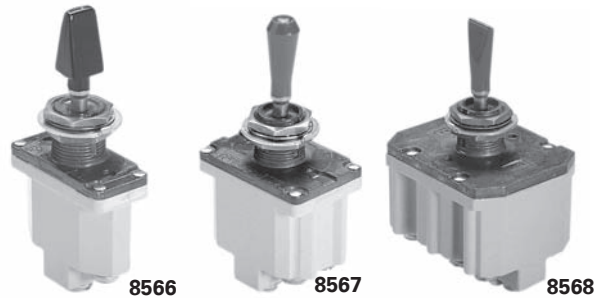
Series - 8566, 8567, 8568

Environmentally Sealed Designerline Toggle Switches

| FEATURES | SPECIFICATIONS | CURRENT RATINGS | | | | | | | | |
|---|--|-----------------|----------------|-------------------|-----------|----------------|----------------|------------------------|----------------|----------------|
| | | No. of Poles | Catalog Number | Type of Operation | 28VDC | | | 115 VAC 60 or 400Hz | | |
| | | | | | Lamp Load | Resistive Load | Inductive Load | Lamp Load | Resistive Load | Inductive Load |
| <ul style="list-style-type: none"> Completely sealed against dust, moisture, and other contaminants Variety of lever styles and colors One hole mounting for easy installation 2 & 3 position with maintained and momentary action 1, 2 and 4 pole circuitry Molded-in terminal inserts and terminal numbers Color-coded shaped levers for operator feel and cosmetic appearance | <ul style="list-style-type: none"> Watertight seal per MIL-STD-108E and designed to meet IP68 Bushing: 15/32" - 32 thread Temperature Range: -50°F to +150°F (-46°C to +66°C) Life: 20,000 operations at rated load 40,000 operations mechanical life Thermoset molding materials meet flame retardant requirements | 1 | 8566 | Maintained | 5 | 20 | 15 | 3 | 15 | 10 |
| | | Momentary | | 4 | 15 | 10 | 2 | 15 | 7 | |
| | | 2 | 8567 | Maintained | 7 | 20 | 15 | 4 | 15 | 15 |
| | | | | Momentary | 5 | 18 | 10 | 2 | 11 | 8 |
| | | 4 | 8568 | Maintained | 5 | 20 | 12 | 4 | 15 | 15 |
| | | | | Momentary | 4 | 18 | 10 | 2 | 11 | 8 |

SELECTION TABLE

FLUSH SCREW TERMINALS



| CIRCUIT WITH LEVER IN . . . | | | ONE POLE | TWO POLE | FOUR POLE | LEVER SUFFIXES ¹ | | |
|-----------------------------|-----------------|------------------------|----------------|----------------|----------------|-----------------------------|--------------|---------------|
| Up Position | Center Position | Down Position (Keyway) | Catalog Number | Catalog Number | Catalog Number | Shape [®] Suffix | Color Letter | Suffix Number |
| ON | OFF | ON | 8566K1 | 8567K1 | 8568K1 | All | White | 21 |
| ON | NONE | OFF | K9 | K9 | K9 | | | |
| ON | NONE | ON | K4 | K4 | K4 | | | |
| ON | OFF | NONE | K6 | K6 | K6 | | | |
| ON | NONE | ON* | 8566K5 | 8567K5 | 8568K5 | All | Red | 22 |
| * ON | OFF | ON* | K2 | K2 | K2 | | | |
| NONE | OFF | ON* | K7 | K7 | K7 | | | |
| ON | NONE | OFF* | K10 | K10 | K10 | | | |
| OFF | NONE | ON* | K11 | K11 | K11 | | | |
| ON | OFF | ON* | 8566K3 | 8567K3 | 8568K3 | All | Black | 27 |
| * ON | ON | NONE | K12 | K12 | K12 | | | |
| ON | ON | NONE | K13 | K13 | K13 | | | |
| ON | ON | ON | — | 8567K14 | 8568K15 | All | Black | 27 |
| ON | ON | ON* | — | K15 | K16 | | | |
| * ON | ON | ON* | — | K16 | K17 | | | |
| ON | ON | ON | — | 8567K17 | — | | | |
| ON | ON | ON* | — | K18 | — | All | Black | 27 |
| * ON | ON | ON* | — | K19 | — | | | |

* Momentary contact.

See page A71 for circuit diagrams.

^① A complete catalog number consists of a basic switch number followed by a lever shape suffix letter and a two-digit lever color suffix number. Example: 8566K1C21.

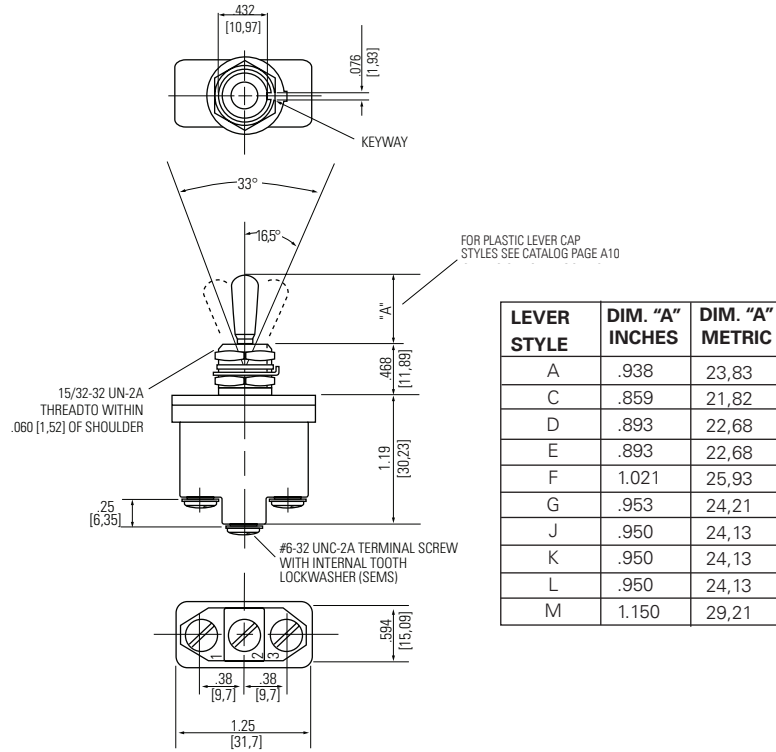
^② Select lever shape suffix letter from page A10.

INDUSTRIAL - ENVIRONMENTALLY SEALED SWITCHES

Environmentally Sealed Designerline Toggle Switches

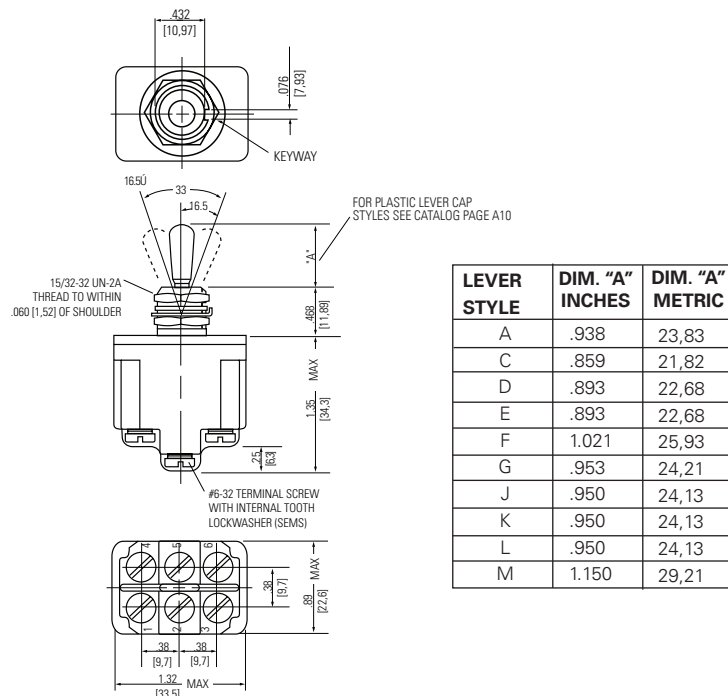
Series - 8566, 8567, 8568

MOUNTING DIMENSIONS - ONE POLE / 8566



Terminal Identification

MOUNTING DIMENSIONS - TWO POLE / 8567



Terminal Identification

STANDARD
0.00 = inches
[0,0] = mm

Mounting dimensions for reference only.

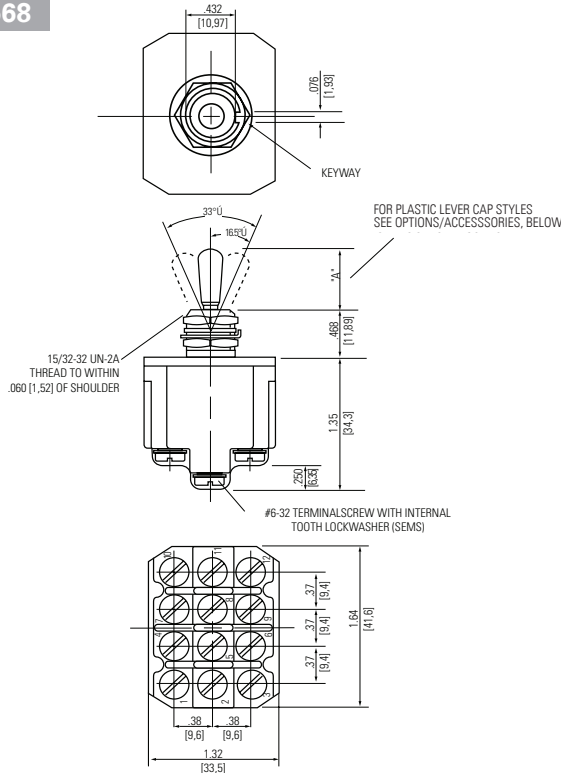
Non-functional terminals not supplied.

INDUSTRIAL - ENVIRONMENTALLY SEALED SWITCHES

Series - 8566, 8567, 8568

Environmentally Sealed Designerline Toggle Switches

MOUNTING DIMENSIONS - FOUR POLE / 8568



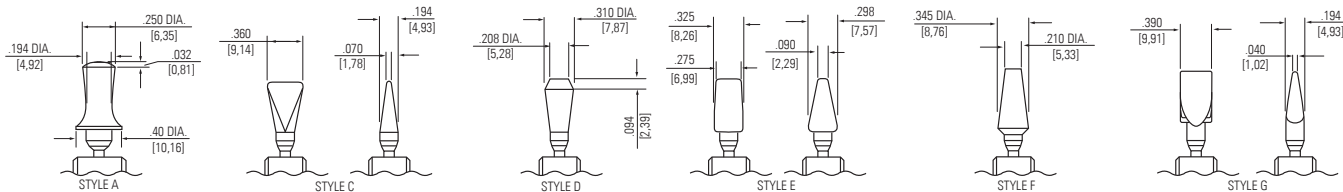
| LEVER STYLE | DIM. "A" INCHES | DIM. "A" METRIC |
|-------------|-----------------|-----------------|
| A | .938 | 23,83 |
| C | .859 | 21,82 |
| D | .893 | 22,68 |
| E | .893 | 22,68 |
| F | 1.021 | 25,93 |
| G | .953 | 24,21 |
| J | .950 | 24,13 |
| K | .950 | 24,13 |
| L | .950 | 24,13 |
| M | 1.150 | 29,21 |

Terminal Identification

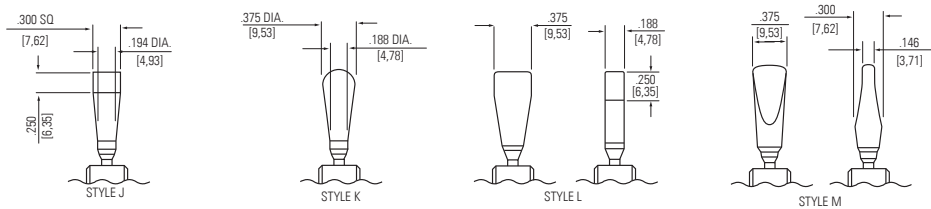
Non-functional terminals not supplied.

OPTIONS/ACCESSORIES

- Standard colors available - White, red and black

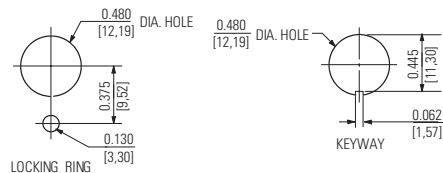


- Special mounting hardware
- Mounting hardware furnished assembled
- Terminal screws furnished assembled
- Spade terminal adapters available
- Panel seal, Part Number 32-341
- Special circuits



PANEL CUTOUT DIMENSIONS

15/32 DIA. BUSHING



STANDARD
0.00 = inches
[0,0] = mm

Mounting dimensions for reference only.