



AC OFF-WINDING MOTOR PROTECTION

Non-Hermetic, Three-Phase Phenolics

Introduction

The protector consists of a molded phenolic base assembly containing three heaters and a Klixon snap-acting thermal disc with three contacts. The Klixon disc is the neutral point of the motor. Each heater is in series with one of the phase windings of the motor, as well as with one of the contacts on the thermal disc. When the disc snaps open because of overheating, the neutral of the motor is open circuited, thereby shutting down the motor. Dual voltage motors are protected with a single protector, as shown in the wiring diagrams below.



Features and Benefits

Provides protection against overheating from running and stalled rotor conditions, including:

- Single-Phasing
- Stalling or Failure to Start
- High Ambient
- Plugging Duty
- Heavy Overloads
- Ventilation Failures

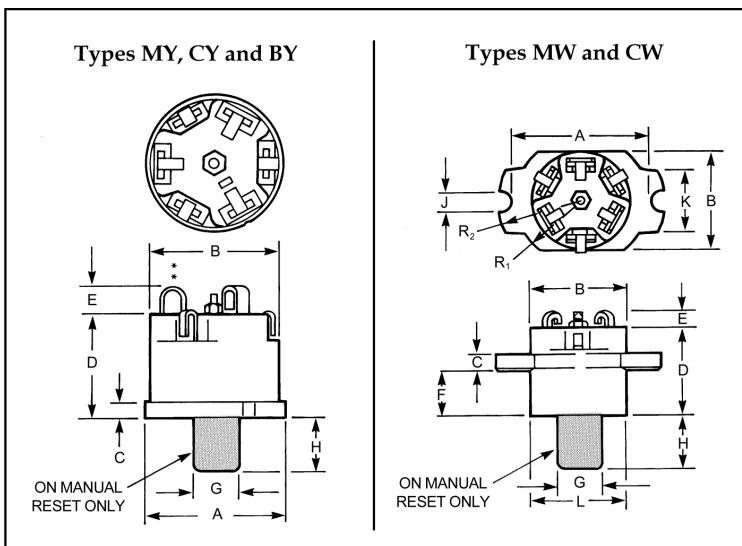
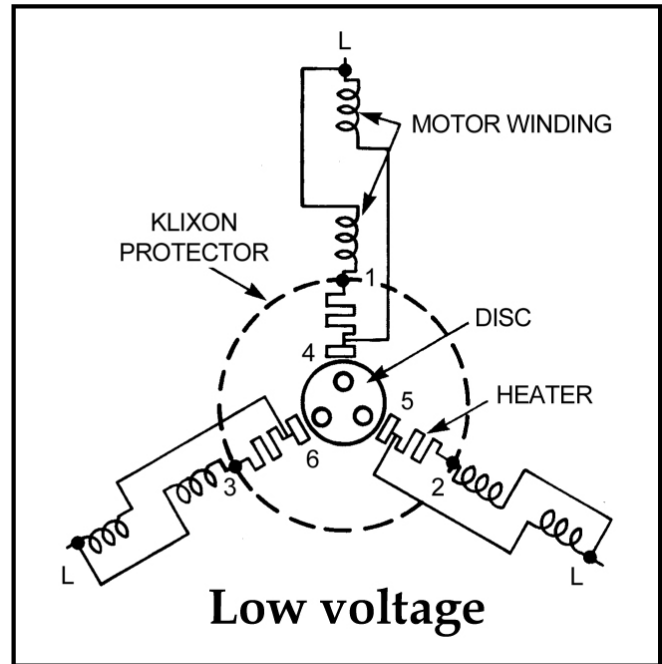
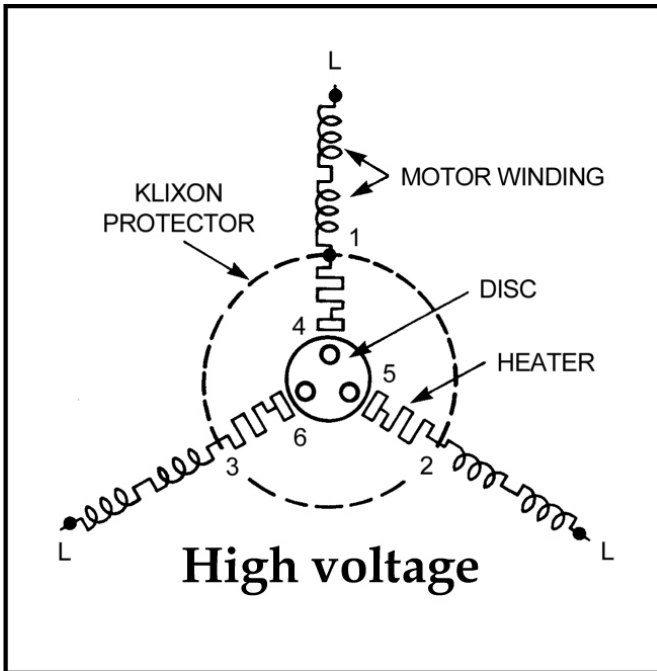
Mounting

The degree of protection obtained depends to a large extent on the protector location and its manner of mounting. The protector should be located in the motor so that it will receive the maximum amount of heating from the windings, not only for running, but also for stalled rotor conditions. The best location depends upon the construction of the motor. The protector could be located in be the air-shield, endbell or possibly the stator iron. Preferably, it should be in the discharge unit.

Engineering Samples

Provide the following information when requesting engineering samples:

1. Motor Horsepower
2. Voltage: single or dual
3. Amperes necessary to raise the motor windings to a stable temperature condition of approximately 130°C for class A, 155°C for class B in 25 C room ambient.
4. The temperature of the protector location iron and the temperature of the protector location air when the motor is stable under above (3) conditions.
5. The locked rotor amperage and time for windings to reach 125°C and 150°C from a 25°C room ambient.
6. Voltage of test.
 - High voltage light load
 - Loss of refrigerant charge
 - Welded start relay
 - Shorted capacitor
 - Blocked condenser fan



Dim	MY	MW	CY	CW	BY
A	1.031±.010	1.390±.015	1.312±.010	1.390±.015	1.640±.010
B	.970±.006	.970±.006	1.218±.010	1.218±.010	1.555±.010
C	.125±.005	.175±.010	.125±.005	.175±.010	.156±.010
D	.926±.010	.896±.010	.926±.010	.926±.010	1.000±.010†
E max	.203	.203	.250		.312
F		.450±.015		.464±.015	
G	.442±.006	.442±.006	.442±.006	.442±.006	.442±.006
H	.437±.031	15/32 max.	.469±.031	½ max.	½ max.
J		.176±.010		.176±.010	
K		.625±.010		.625±.010	
L		.970±.006		1.187±.010	
R ₁		.656±.010		.656±.010	
R ₂		.845±.010		.845±.010	

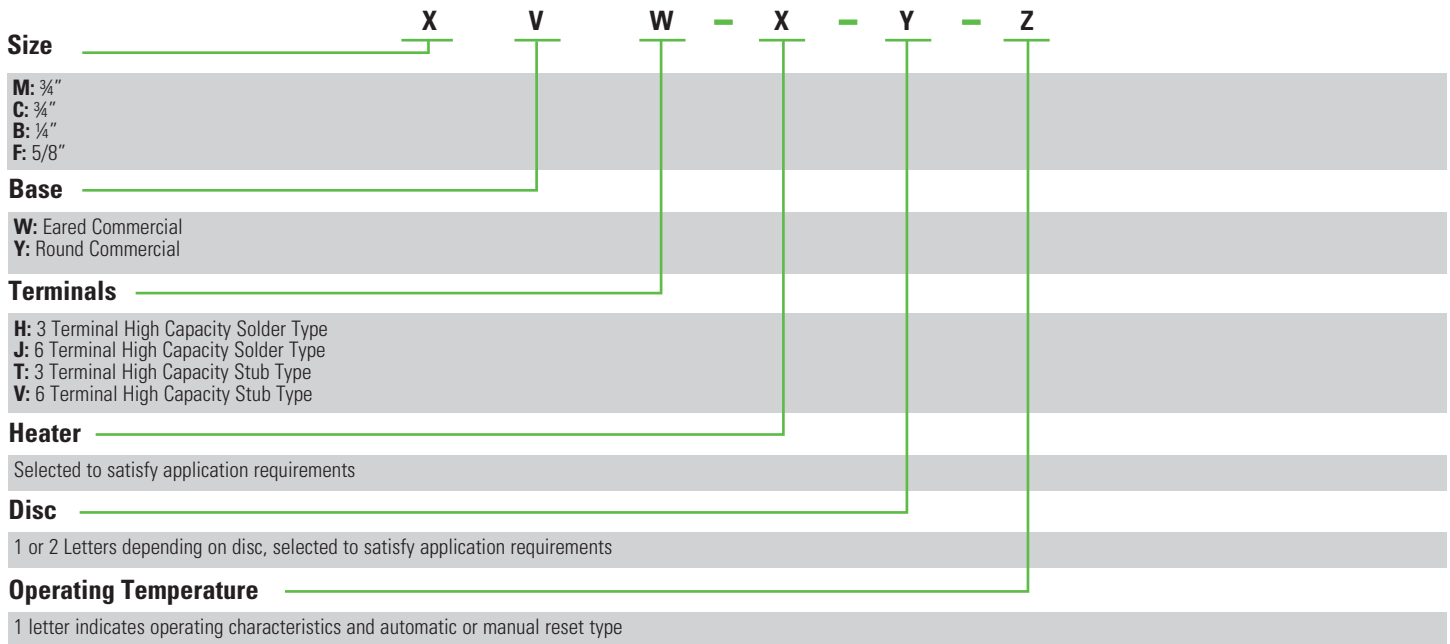
† 1.232 ±.010 for manual reset version.

Protector	Size	Horsepower	Voltage	Max Current	
				220V	440V
MY	¾	1/8-1½	220/440V	37	28
MW	¾	1/8-1½	220/440V	37	28
CY	1	1-3	220/440V	60	45
CW	1	1-3	220/440V	60	45
BY	1¼	2-7½	220/440V	125	75

For dual voltage motors the higher voltage should be used for making the protector application and the lower voltage for selecting the size of the protector based on contact capacity. Because of the many various motor characteristics, a different size Klixon Protector than those indicated in the table above may be necessary for a given horsepower rating.



¾", Eared Commercial, 3 Terminal High Capacity Solder Type, etc.



Sensata Technologies, Inc. ("Sensata") data sheets are solely intended to assist designers ("Buyers") who are developing systems that incorporate Sensata products (also referred to herein as "components"). Buyer understands and agrees that Buyer remains responsible for using its independent analysis, evaluation and judgment in designing Buyer's systems and products. Sensata data sheets have been created using standard laboratory conditions and engineering practices. Sensata has not conducted any testing other than that specifically described in the published documentation for a particular data sheet. Sensata may make corrections, enhancements, improvements and other changes to its data sheets or components without notice.

Buyers are authorized to use Sensata data sheets with the Sensata component(s) identified in each particular data sheet. HOWEVER, NO OTHER LICENSE, EXPRESS OR IMPLIED, BY ESTOPPEL OR OTHERWISE TO ANY OTHER SENSATA INTELLECTUAL PROPERTY RIGHT, AND NO LICENSE TO ANY THIRD PARTY TECHNOLOGY OR INTELLECTUAL PROPERTY RIGHT, IS GRANTED HEREIN. SENSATA DATA SHEETS ARE PROVIDED "AS IS". SENSATA MAKES NO WARRANTIES OR REPRESENTATIONS WITH REGARD TO THE DATA SHEETS OR USE OF THE DATA SHEETS, EXPRESS, IMPLIED OR STATUTORY, INCLUDING ACCURACY OR COMPLETENESS. SENSATA DISCLAIMS ANY WARRANTY OF TITLE AND ANY IMPLIED WARRANTIES OF MERCHANTABILITY, FITNESS FOR A PARTICULAR PURPOSE, QUIET ENJOYMENT, QUIET POSSESSION, AND NON-INFRINGEMENT OF ANY THIRD PARTY INTELLECTUAL PROPERTY RIGHTS WITH REGARD TO SENSATA DATA SHEETS OR USE THEREOF.

All products are sold subject to Sensata's terms and conditions of sale supplied at www.sensata.com SENSATA ASSUMES NO LIABILITY FOR APPLICATIONS ASSISTANCE OR THE DESIGN OF BUYERS' PRODUCTS. BUYER ACKNOWLEDGES AND AGREES THAT IT IS SOLELY RESPONSIBLE FOR COMPLIANCE WITH ALL LEGAL, REGULATORY AND SAFETY-RELATED REQUIREMENTS CONCERNING ITS PRODUCTS, AND ANY USE OF SENSATA COMPONENTS IN ITS APPLICATIONS, NOTWITHSTANDING ANY APPLICATIONS-RELATED INFORMATION OR SUPPORT THAT MAY BE PROVIDED BY SENSATA.

Mailing Address: Sensata Technologies, Inc., 529 Pleasant Street, Attleboro, MA 02703, USA.

CONTACT US

Americas
+1 (508) 236-2551
electrical-protection-sales@sensata.com

Europe, Middle East & Africa
+3 (174) 357 8156
info-sse@list.sensata.com

Asia Pacific
sales.isasia@list.sensata.com
China +86 (21) 2306 1500
Japan +81 (45) 2777 7177
Korea +82 (31) 601 2004
India +91 (80) 7920890
Rest of Asia +886 (2) 27602006
ext 2808